

Citadel

2016 Product Catalog




CITADEL[®]
FLOOR FINISHING SYSTEMS

CITADEL PRODUCT GUIDE: TABLE OF CONTENTS

CITADEL HIGH PERFORMANCE SYSTEM

The High Performance System consists of polyurea and epoxy products specifically designed to meet the needs of professional installers. The HPS provides a quick return to service without sacrificing the strength of the coating. With multiple styles to choose from, Citadel's HPS products create great looking floors that will last for years to come.

High Performance System - Color Guide	3
High Performance System - Floor System Guide	4
High Performance System - Product Overview	6
High Performance System - Primers & Moisture Management	8
High Performance System - Base Coats	9
High Performance System - Polyurea Top Coats	10
High Performance System - Urethane Concrete	11
High Performance System - Additives	12
High Performance System - Concrete Repair Products	14
High Performance System - Cleaners	15

CITADEL PROTECTION SYSTEM

The Citadel Protection System consists of state of the art epoxy products specifically designed to protect the floor. The CPS's broad product line will provide you with exactly the floor functionality needed for your project. Our professional staff will create a specification for your project, making installing your CPS floor easy.

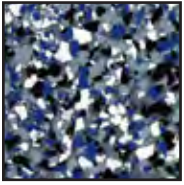
Citadel Protection Systems 8000 System –Floor System Guide	16
Citadel Protection Systems 8000 System –100% Solids Epoxy	20
Citadel Protection Systems 8100 System – Xtra–Premium 100% Solids Epoxy	22
Citadel Protection Systems 8200 System – Chemical Resistant Epoxy	24
Citadel Protection Systems 8300 System – Plus–Novolac Epoxy	28
Citadel Protection Systems 8600 System – 45/65–Low Temp Epoxy	30
Citadel Protection Systems 9000 System – Epoxy Mortar Topping	32
Citadel Protection Systems 9600 System – Decorative Quartz	34
Citadel Protection Systems 4600 System – Electrostatic Discharge Control Decorative Quartz	36
Citadel Protection Systems 4700 System – ESD–Electrostatic Discharge Control Coating	37
Citadel Protection Systems Epoxy Grouts	38
Citadel Protection Systems Epoxy Primers	40
Chemical Resistance	42
Tools	46

Application Type Classification:

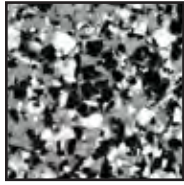
Application Type I Products that can be applied by properly trained in-house maintenance crews.

Application Type II Products typically contractor installed by our independent national contractor network.

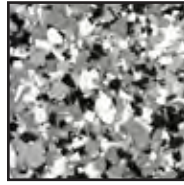
DECORATIVE VINYL CHIP COLORS



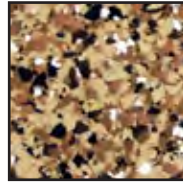
DENIM



DOMINO



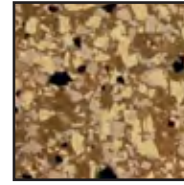
GRAVEL



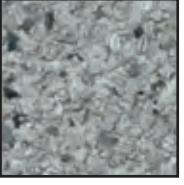
SADDLE TAN



GUNFLINT TRAIL



TAN



SCHIST STONE



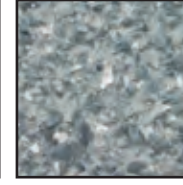
GARNET STONE



OBSIDIAN STONE



PUMICE STONE



BASALT STONE

MEDICI COLORS



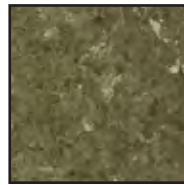
BROWN SLATE
(Chocolate & Si Si Tan)



TERRA COTTA
(Brick Red & Si Si Tan)



GOLD SANDSTONE
(Gallant Gold & Cream)



GREEN VINEYARD
(Best Bronze & Cream)

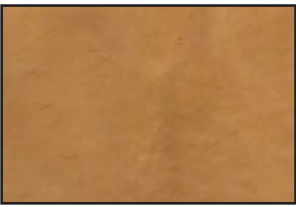


SIENNA SUNSET
(Chocolate & Limestone)



STONE OBSESSION
(Dj Darkness & Antonio Silver)

PEARLESCENCE METALLIC COLORS



BURNISHED GOLD



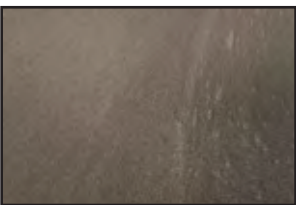
AMARETTO



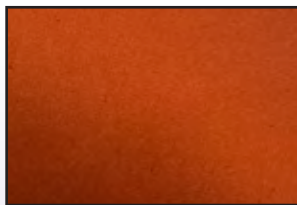
CHERRY BOMB



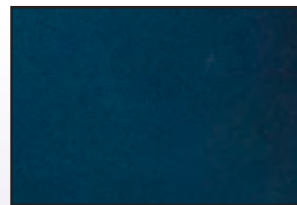
GUNMETAL



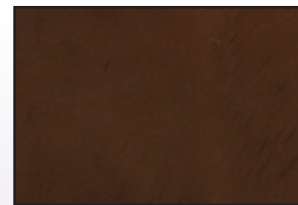
SILVER BULLET



COPPER POT



BRILLIANT BLUE



EARTH BROWN

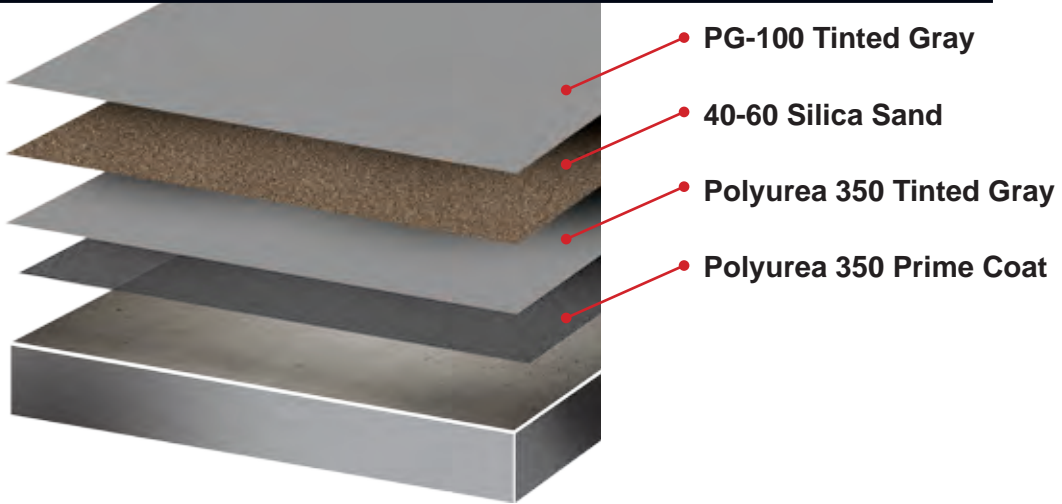
PRODUCT IDENTIFICATION CODES:

CB	Cove Base	QS	Quick Set
CPS	Citadel Protection Systems	S	Smooth (Glaze/Topcoat)
CR	Corrosion Resistant	SC	Static Control
C	Conductive	SD	Static Dissipative
ESD	Electrostatic Discharge	SL	Self-Leveling
GP	General Purpose	TX	Textured (Extreme Orange Peel)
HD	Heavy-Duty Topping/Resurfacer	V	Vertical
OP	Orange Peel		
P	Primer		

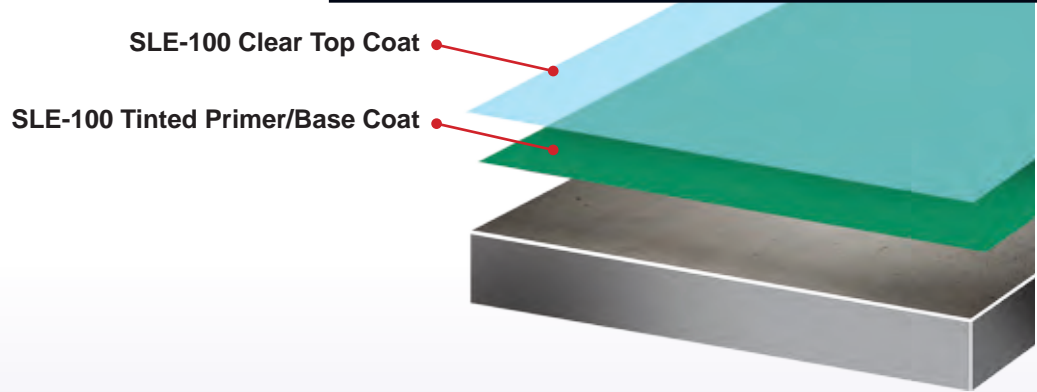
Colors are printing approximations and may vary.



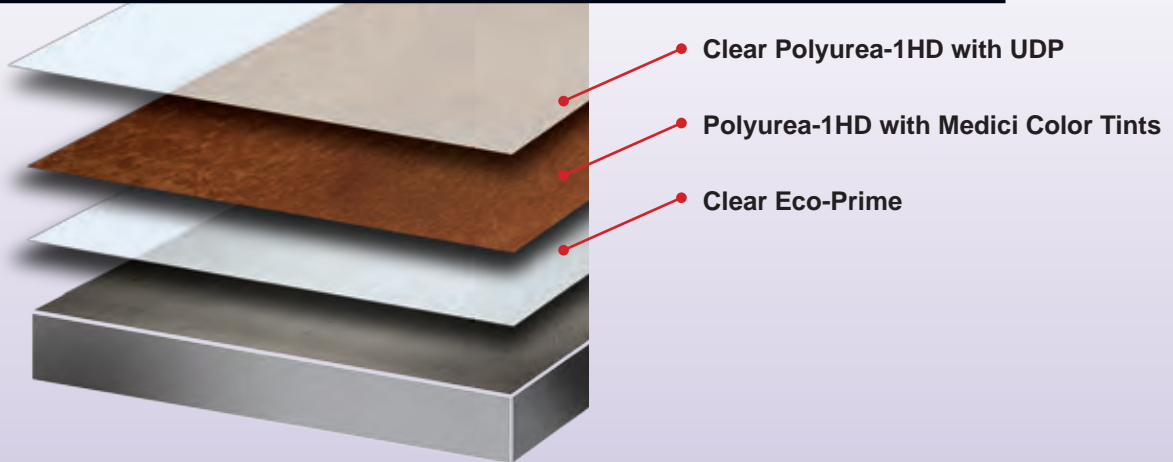
PARKING GARAGE SYSTEM

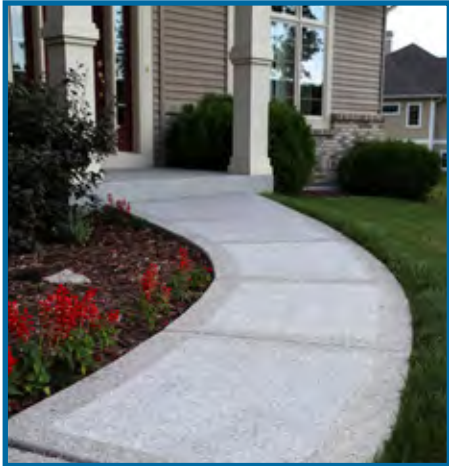


SOLID COLOR SYSTEM



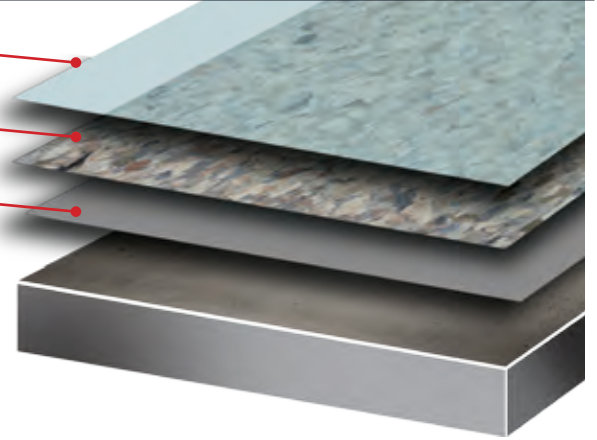
MEDICI SYSTEM



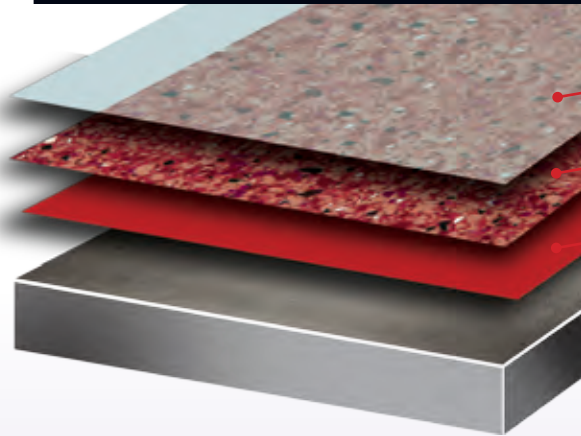


STONE SERIES DECORATIVE CHIP SYSTEM

- RG-80 Top Coat with Anti-Slip
- Stone Series Decorative Chip
- Polyurea 350 with Color Tint



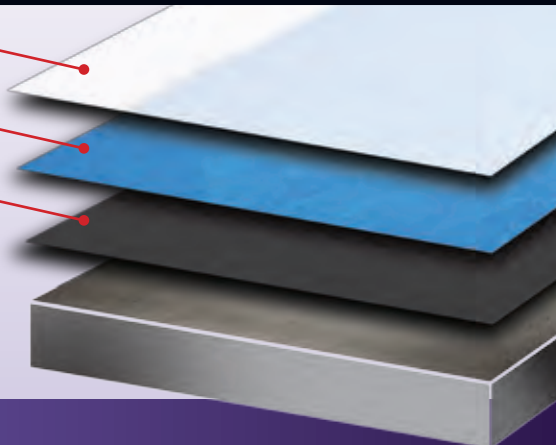
DECORATIVE CHIP SYSTEM



- RG-80 Top Coat
- Decorative Chip
- Polyurea 350 with Color Tint

METALLIC SYSTEM

- Polyurea 1-HD with UDP
- Polycuramine with Metallic Tint
- Tinted Eco-Prime



High Performance System Coating Products

	Primer	Moisture Mitigation		Primer/Base Coat	
	Eco-Prime	Ultra Hydro-stop H2O	Ultra Hydro-stop	Poly100SC	350
Technology	Single component Polyurea primer	Water based Moisture Mitigating and pH resistant primer	100% solids Moisture Mitigating and pH resistant primer	Single Component 100% solids Polyurea	2K - 98% solids Polyurea basecoat
Features & Benefits	Fast cure, zero VOC, low odor, dust proofer, Direct to metal primer and Unlimited Pot life	Holds back up 6 lbs MVT - 1 coat & 12 lbs MVT in two coats. Works as green concrete primer	Holds up to 25lbs MVT- 1 coat	Fast cure, low odor, zero VOC, and unlimited pot life	30 Min pot life, vertical/horizontal application, no mil thickness requirement
Recommended Substrates	Concrete and metal	Concrete	Concrete	Concrete	Concrete, wood and tile
Color	Clear or Tintable	Clear	Clear	Tintable	Tintable
Coverage rate per gallon	700 sq ft.	250 sq ft.	80-100 sq ft.	300-400 sq ft.	100-350 sq ft.
Installation temperature	40 to 120°F	50° to 100°F	50° to 100°F	40° to 120°F	-20° to 120°F
Dry Time	1-4 hrs and Drive on 24 hours	4-6 hours	10-12 hours	2-4 hrs and Drive on 24 hours	2-4 hrs and Drive on 24 hours
Application	3/8" nap roller	3/8" nap roller or Flat blade squeegee	1/4" notched squeegee	3/8" nap roller	3/8" nap roller or Squeegee
Packaging (Min Qty)	2 gallon kit	1.5 gallon kit	5 gallon kit	2 gallon kit	3 gallon kit

Innovation is a passion that continues to drive the growth of Citadel Floor Finishing Systems and why we are a leading manufacturer of Floor Coatings. Citadel Floor Finishing Systems has evolved over the years from a mid-size installation company into one of the largest Floor Coatings Manufacturers supplying operations worldwide. Our manufacturing division has been developing and applying Polyurea and Polycuramine coatings for years on a large variety of substrates, creating the ultimate flooring solution for commercial, industrial, or residential applications.

UV Stable Top Coats				Hybrid Base/Top Coat	
RG80	PG100	Poly 1HD	Poly 2 ULTRA	PolyCuramine	SLE-100
2K Aliphatic polyaspartic polyurea	2K 100% solids Aliphatic, polyaspartic	Single Component Aliphatic Polyurea	100% Solids Single Component Aliphatic Polyurea	2K Cyclo-aliphatic coating system	2K 100% solids epoxy
30 min pot life, high gloss, UV stable, fast cure, excellent chemical resistance, interior/exterior application	30 min pot life, UV stable, no odor, high gloss, fast cure, excellent chemical resistance, interior/exterior application	High gloss, UV stable, excellent chemical and abrasion resistance, unlimited pot life	Very low odor, high gloss, UV stable, excellent chemical and abrasion resistance, unlimited pot life	45 Min pot life, high gloss, low odor, No VOC, high chemical resistance, self-leveling with high impact resistance, quick return to service	1 hour pot life, high gloss, low odor, no VOC, high chemical resistance, self-leveling with high impact resistance
Used as top coat	Used as Top coat	Direct to concrete and as a top coat	Direct to concrete and as a top coat	Concrete, wood, tile or as top coat	Concrete
Clear or Tintable	Clear or Tintable	Clear or Tintable	Clear or Tintable	Clear or Tintable	Clear, Gray or Tan
150-500 sq ft.	100-300 sq ft.	300-600 sq ft.	300-600 sq ft.	100-400 sq ft.	100-400 sq ft.
-20° to 120°F	-20° to 120°F	40° to 100°F	40° to 100°F	50° to 100°F	50° to 100°F
2-4 hrs and Drive on 24 hours	2-4 hrs and Drive on 24 hours	4-6 hrs and Drive on 24 hours	4-6 hrs and Drive on 24 hours	8-10 hours, Drive on 24 hours	10-12 hours and Drive on 48 hours
3/8" nap roller or Squeegee	3/8" nap roller or Squeegee	3/8" nap roller	3/8" nap roller	3/8" nap roller or Squeegee	3/8" nap roller or Squeegee
4 gallon kit	5 gallon kit	2 gallon kit	2 gallon kit	3 gallon kit	3 gallon kit

Contact us for more information
(866) 765-4310

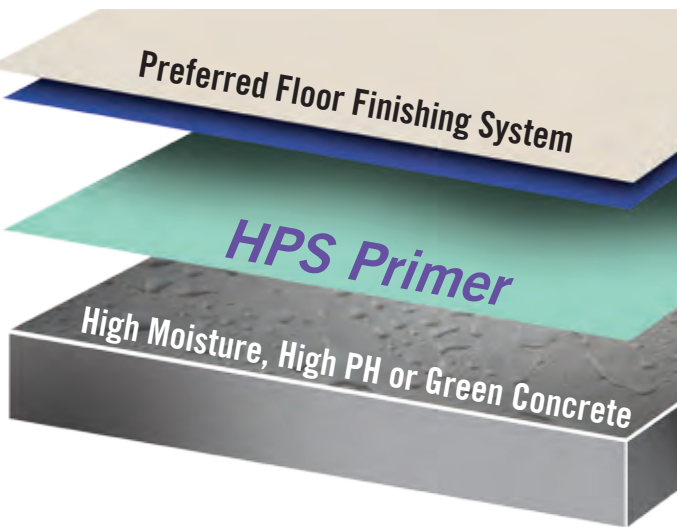
www.citadelfloors.com





HPS

**HIGH PERFORMANCE SYSTEM
 PRIMERS & MOISTURE MITIGATION**



Eco-Prime™



This easy to spread primer is a single component, fast drying, low odor and ultra-low VOC solution to porous concrete slabs absorbing successive coatings. For increased vibrancy of colors in the Medici Polyurea Color Coating System™, the Eco-Prime can be installed to effectively “seal” the concrete for better results. Eco-Prime is a cost effective way to ensure the best possible results on every application.

Typical Uses: Prime prior to Medici System

Size: Available Clear in 2 gallon kits with a coverage rate of 650 sq ft / gal. over ground concrete

Ultra-Hydro Stop Primer™



Ultra-Hydro Stop Primer is a two component, 100% solids, moisture blocking and pH resistant epoxy primer used to remedy concrete floors with high moisture readings up to 25 lbs. It has excellent self-leveling properties, making it a great choice for floors with minor pitting, spalling and other imperfections.

Typical Uses: This self-leveling, moisture stopping concrete primer has high-build capability. Use in new construction as a moisture block underneath coating systems, hardwood floors, carpet or tile.

Size: Available Clear in a 5 gallon kit with coverage rates of 80-120sq ft / gallon over shot-blast concrete
Coverage: 90 sq ft / gal.

Ultra-Hydro Stop H₂O Primer™



Ultra-Hydro Stop H₂O Primer is a two component, 50% solids, water-based, moisture blocking and pH resistant epoxy primer used to remedy concrete floors with high moisture readings up to 12 lbs. The H₂O primer has excellent adhesion to moisture laden concrete slabs in areas such as basements and warehouses where it is roller or squeegee applied. It can be applied to concrete as early as 48 hours after placement, reducing job-site downtime and delays in production.

Typical Uses: This is a strengthening, self-leveling, moisture stopping primer which can replace curing compounds on “green concrete”.

Size: Available Clear in a 1.5 gal kit
Coverage: 250 sq ft / gal.



CITADEL LEGACY PRODUCTS

POLYUREA BASE COATS & HYBRID BASE / TOP COATS

Poly100-SC™



Poly100-SC is a Single Component Polyurea Primer/Basecoat that's perfect for both solid color and broadcast systems. As a 100% solids primer, it has zero VOCs, making it the ideal solution for minimizing odor and environmental impact. Its virtually unlimited pot life allows for work at any pace yet cures quickly when applied, allowing a mere 2-6 hour walk on time and 24 hour return to service. No mixing, no measuring, no waste, no hassle.

Typical Uses: For use with Solid Color Systems, Decorative Aggregate Broadcast Systems and Single Coat solutions. Suitable for large warehouse facilities, heavy traffic areas, industrial shop floors and chemical manufacturing plants.

Size: Available Clear in 2 gallon kits with a coverage rate of 350-400 sq ft / gallon over ground concrete
Coverage: 350-400 sq ft / gal. depending on system chosen

Polycuramine™



Polycuramine is an odor free, interior clear base, which serves as the foundation of a multitude of the Citadel finishing systems. It provides incredible abrasion resistance and extreme chemical resistance. This product combines key attributes from multiple chemistries into one indestructible, self-leveling, flexible, fast curing, high gloss coating system.

Typical Uses: Serves as the primer, base coat or clear coat for a multitude of floor finishing systems.

Size: Available liquid in a 3 gallon kit. Coverage varies between systems and uses.

Polyurea 350™



Polyurea 350 is a two-component, 98% solids Polyurea primer/basecoat. Due to its proprietary blend of resins, Polyurea-350™ allows installers to “wet-out” large areas, including vertical surfaces, before broadcasting decorative aggregates such as quartz, vinyl chips, or flint. This longer “open time” results in perfect broadcasts every time, eliminating problems with light coverage, inconsistencies, or blemishes. Citadel's Adjustable Cure Rate Technology allows the installer to customize the workability and cure times of this material for use in any climate.

Typical Uses: Decorative aggregate broadcast systems

Size: Available Clear in 5 gal buckets (A&B) or 3 gallon kits with a coverage rate of 350sq ft / gal over ground concrete

SLE-100™



SLE-100 is a two component, 100% solids, cyclo-aliphatic hybrid coating system that has exceptional adhesion properties to concrete substrates. Due to its unique chemistry, this coating exhibits great flexibility, working times and self-leveling properties while offering great chemical resistance as well. Low odor makes it a great choice for interior applications. Sold in Gray or Tan.

Typical Uses: Serves as a primer/basecoat for a multitude of floor finishing systems. SLE-100 is also self-leveling and serves as a build coat for heavily damaged floors.

Size: 3 gallon kit **Coverage:** 100-200 sq ft. / gal.



HAPS

HIGH PERFORMANCE SYSTEM
 POLYUREA TOP COATS

RG-80x™



RG-80x is a two-component, 85% solids, VOC Compliant, Aliphatic Polyaspartic Polyurea developed for UV stable floor topcoats, marine applications, chemical resistance and corrosion control. This coating provides reliable performance in a wide range of temperatures and climate conditions. Its 100% UV stability makes it an excellent choice for both interior and exterior applications.

Typical Uses: This UV-stable top coat is suitable for both interior and exterior applications.

Size: Available Clear in 5 gallon buckets (A&B) or 4 gallon kits with coverage rates of 250-350 sq ft./gal over solid color, 80-120 sq ft./gal over quartz, and 150-200sq ft./gal over full chip

Coverage: 250-600 sq ft. / kit, depending on technique

PG-100™



PG-100 is a two-component, 100% solids, VOC Free, Aliphatic Polyaspartic Polyurea that was developed for UV stable floor topcoats, marine applications, chemical resistance and corrosion control. This coating provides reliable performance in a wide range of temperatures and climate conditions. Its 100% UV stability and no odor makes it an excellent choice for both interior and exterior applications.

Typical Uses: Use as a UV stable topcoat in a wide variety of applications including: marine protection for fiberglass, concrete or wood, aircraft hangar floors, low temperature equipment, maintenance facilities, offshore platforms, industrial shop floors, car washes or wash bays, primary and secondary containment, cooling towers, wastewater treatment applications, bridges and more.

Size: Available in 5 gallon buckets (A&B) or 5 gallon kits with a coverage rate of 250-350 sq ft / gal over solid color, 80-120 sq ft / gal over quartz, and 100-175 sq ft / gal over full chip. **Coverage:** Approx. 175 sq ft. / gal.

Polyurea-1 HD™



Polyurea-1 HD is the workhorse of the Single Component Aliphatic Polyurea family. This optically clear high gloss finish is 100% UV stable. This high performance top coat is used on many systems including; Medici™ System, UV Solid Color systems, Chip Systems and Metallic Systems. The virtually unlimited pot life allows you to work at any pace and is self-leveling meaning no roller lines.

Typical Uses: Primarily a clear top coat for many systems.

Size: Available Clear in 2 gallon buckets with a coverage rate of 150-250 sq ft / gal over full chip, 400-700 sq ft./gal over solid color or Medici® **Coverage:** 250-500 sq ft. / gal, depending on technique

Polyurea-2 Ultra™



Polyurea-2 ULTRA is a low odor 100% solids Single Component Aliphatic Polyurea top coat. This optically clear high gloss finish is 100% UV stable. This high performance top coat is used on many systems including; Medici System, UV Solid Color systems, Chip Systems and Metallic Systems. The virtually unlimited pot life allows you to work at any pace and is self-leveling meaning no roller lines.

Typical Uses: Primarily a clear top coat for many systems.

Size: Available Clear in 2 gallon buckets with a coverage rate of 150-250 sq ft / gal over full chip, 400-700 sq ft / gal over solid color or Medici® **Coverage:** 250-500 sq ft. / gal, depending on technique



HIGH PERFORMANCE SYSTEM URETHANE CONCRETE

The Urathane Concrete system is assessed as non-hazardous to health and the environment. HPS Urethane Concrete systems are USDA/FDA compliant & HACCP International certified. The long service life and seamless surface reduce the need for repairs and maintenance. Environmental and health considerations are controlled during manufacture and application of the products.

- Contains a silver ion antimicrobial additive to protect the surface.
- Low odor installation, non-toxic, and phthalate-free formulation.
- Positively textured profile to minimize slip risks in wet or damp areas.
- Resistant to temperatures of up to 210°F and suitable for steam cleaning.
- Allows moisture to move through the material at a safe rate.

UC-250™



UC-250™ is a trowel applied, heavy duty, and HACCP International certified antimicrobial treated cementitious urethane mortar. UC-250 is highly chemical resistant, slip resistant, can resistant temperatures of up to 250 F and is unaffected by MVT.

Typical Uses: Heavy Industrial use areas, food and beverage or manufacturing facilities.

Packaging: 24 Sq. Ft. Kit at 1/4"

UC-190™



UC-190™ is a slurry broadcast, anti-slip and HACCP International certified antimicrobial treated cementitious urethane flooring system. Due to its unique chemistry, this coating exhibits low odor, slip resistance, temperature resistance of up to 210 F and unaffected by MVT.

Typical Uses: Heavy Industrial use areas, food and beverage or manufacturing facilities.

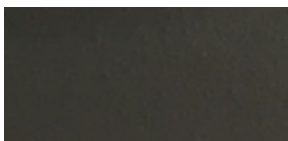
Packaging: 24 Sq. Ft. Kit at 3/16". Broadcast: Silica Sand at 1lb/SF.

Top Coat Options:

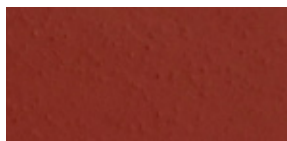
UC-190 TopCoat

UC-190 TopCoat UV

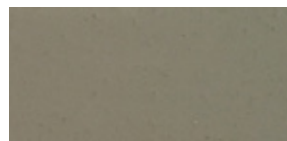
UC-250 COLORS



Dark Grey



Tile Red



Grey

UC-190 COLORS



Dark Grey



Tile Red



Grey





HIPS

**HIGH PERFORMANCE SYSTEM
ADDITIVES**

Metallic Powder Tints™



Pearlescent Metallic powder tints produce marbelized floor coatings that contain pearlescent and iridescent accents with gleaming finishes. These lustrous floor coatings are the newest solution for commercial applications, retail environments and for many residential customers looking to set their home apart from others.

Typical Uses: Simply add the color tints to your Citadel Polycuramine Base Coat™ to give your floor virtually any look you desire.

Size: 2 oz. **Coverage:** 2oz per 1 Gallon of Polycuramine Base Coat™



Universal Tints



Citadel Universal Tints can be used in many of the standard systems when added to base coats or primers. There are several colors to choose from and custom colors can also be ordered.

Typical Uses: Simply add the color tints to base coats in the systems for a variety of options.

Size: 15 oz. can **Coverage:** varies by system and application technique

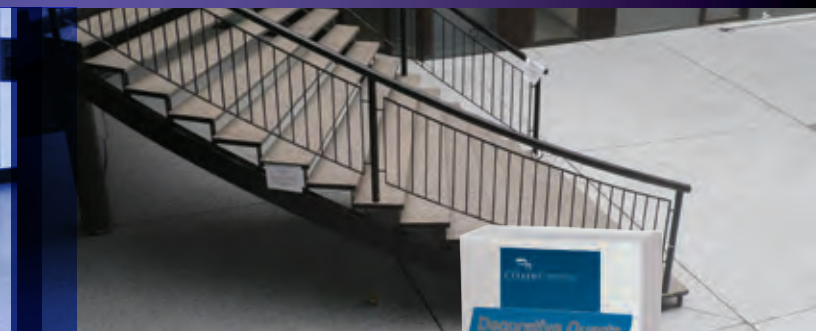
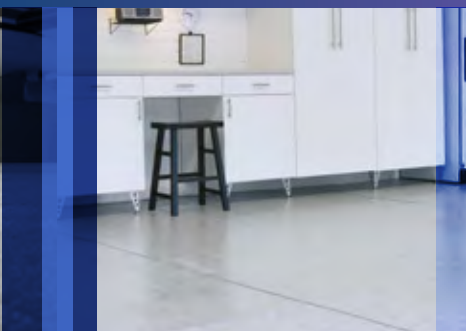
Ultra Durability Plus™



Citadel Ultra Durability Plus is a proprietary additive for the Citadel Topcoat that increases the abrasion resistance and creates a micro-textured surface while reducing gloss to provide a satin finish.

Typical Uses: To be used in conjunction with the Citadel Topcoat as an abrasion resistance additive

Size: 1 qt. can **Coverage:** mix 1 qt. per gal. of topcoat; 500 sq ft / gal



Decorative Chip™



Citadel Decorative Chips are made of a vinyl composite and have been developed to soak in and absorb resinous coatings such as epoxies, urethanes, and our specialty products – Polyureas and Polyaspartic Polyureas. These are the only decorative chips with the physical properties to work reliably with our Citadel systems.

Typical Uses: Our chip systems provide decorative yet highly durable surfaces with the appearance of granite, marble or terrazzo. Our 2 layer, easy to install chip systems are our most popular seller with installers. Great for any garage, basement, bathrooms, and light commercial environments. Use RG-80x™ as a top coat for ease of use.

Size: 50lb boxes **Coverage:** 1/4" Chip: 10 sq ft./lb coverage; 1/8" Chip: 8.5 sq ft./lb coverage; 1/16" Chip: 7 sq ft./lb coverage

Anti-Slip Additive



Citadel's Anti-Slip Additive™ is aluminum oxide grit that suspends in the coating, providing a safe, non-slip environment. The product is broadcast on top of the wet coating and back rolled in. This extremely durable additive is recommended for any floor coating system and creates a less aggressive textured surface than using the silica sand.

Typical Uses: Broadcast over coatings to provide a safe, non-slip surface.

Size: 3 lb. container **Coverage:** 1 qt. covers 1,000 sq. ft.

Decorative Quartz™

A very strong durable coating with extreme abrasion resistance that maintains a rough texture that conforms to all OSHA slip requirements. Great application in all commercial kitchens, entry ways, industrial bathrooms, and heavy traffic areas. This is our main seller to customers for any commercial and industrial system. Unlimited color options for the quartz keeps the design options open for any decorative work. Usable on vertical surfaces, and with the installation of Speed Cove®, this system is a seamless, easy to clean durable surface that will work for many years.

Typical Uses: CFFS decorative quartz blends are used to create seamless decorative floor finishes that provide a textured, monolithic, and hard wearing surface. These UV stable blends are perfect for exterior uses such as sidewalks, entries, and stairs, while the inherent strength of the quartz makes it ideal for warehouse floors and those with forklift traffic. Due to the small size of the quartz granules, these floors will exhibit a more uniform and muted finish than decorative chip systems.

Size: 50lb bags **Coverage:** Single Broadcast: 2 sq. ft. / lb coverage; Double Broadcast: 1 sq. ft. / lb coverage

Silica Sand



Citadel's silica sand is used as the broadcast medium for the Citadel Solid Color Quartz system. It can also be used as a more aggressive anti-slip solution.

Typical Uses: Silica sand serves as the broadcast medium for the Solid Color Quartz system.

Size: 50 lb. bag **Coverage:** 2 sq. ft. / lb.



HAPS

HIGH PERFORMANCE SYSTEM
 CONCRETE REPAIR PRODUCTS



Polyflex 93™

Polyflex-93 is a two component, 100% solids, VOC Compliant, self-leveling flexible control and expansion joint filler. It cures rapidly and consistently at temperatures ranging from 0° to 120°F. With a tack-free time of less than 25 minutes, it reduces downtime and allows vehicle or foot traffic in one hour. Excellent elastomeric properties make it flexible while its bond to the concrete's joints leads to long lasting performance. Polyflex-93 is easily coated over using a wide variety of Citadel products.

Typical Uses: Polyflex-93 is designed to fill expansion joints in concrete. Requires a dual cartridge gun for application.

Size: Available in a 22oz dual cartridge (Concrete Gray color) **Coverage:** varies



Fast Patch™

Citadel's Fast Patch is a two-component patch material used to repair cracks, spalls and minor damage to concrete surfaces and apply coatings without waiting for the repairs to cure. Fast Patch has zero VOCs, is easy to mix at a 1:1 ratio, and no special equipment is required for application.

Typical Uses: Repair cracks and minor spalls in concrete

Size: Available in 1 or 2 quart kits (Concrete Gray color) **Coverage:** varies



Fortification Formula™

Fortification Formula is a fast setting, low viscosity modified Polyurea repair material that is very versatile in repairing and re-building damaged concrete. Fortification Formula is a dual component, 1:1 ratio, easy to mix system that is 100% solids and VOC free. It is an excellent choice for repairs that require fast return-to-service times (10-30 minutes). Best of all, it can be applied at any temperature with adjustable workability.

Typical Uses: Fortification Formula can be used to set anchor bolts, repair cracks and damaged control joints, fill spalling, and rebuild vertical curbing and steps. It bonds well to concrete, wood, fiberglass and asphalt and can be used in depths of 1/16" to 3" without filler. Once cured, Fortification Formula will not swell or shrink with temperature changes. It's non-porous and will not allow bacteria, mold and other pathogens to bond to it.

Size: Available in 1 Gal Kits and a 22oz dual cartridge (Concrete Gray color) **Coverage:** varies





HIGH PERFORMANCE SYSTEM CLEANERS AND CONCRETE PREP PRODUCTS

CPC™



CPC Degreaser is a heavy-duty, citrus based concrete stripper and degreaser. It's VOC compliant, easy to work with and has a pleasant orange smell. It is excellent for stripping, degreasing and general cleaning purposes.

Typical Uses: This multi-purpose cleaner is ideal for commercial uses of all kinds.

Size: Available in 1 gallon containers

Coverage: 200 sq. ft. / gal.

XRS Anti Graffiti Wipes™



Graffiti Wipes utilize our migratory technology that chemically fractures the molecular bonds in paints, lacquers, enamels and stains. The formula was designed for maximum consumer safety while still delivering superior performance.

Typical Uses: remove graffiti off any surfaces

Container: 25 (5x10") pre-moistened towels

Safe-Etch Acid™

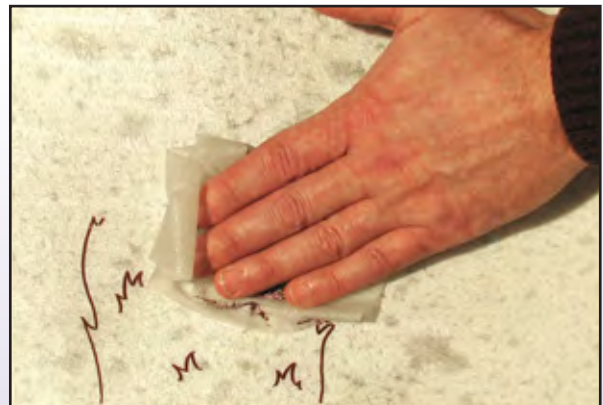


Safe-Etch Acid Solution is used to open the pores of concrete surfaces to allow coatings to penetrate and achieve a proper bond. A true alternative to muriatic acid, it creates the same profile without all the harsh odors, dangerous chemicals and the need to neutralize after etching. Simply flush with clean water, allow the concrete to dry and you are ready to apply coatings.

Typical Uses: Use on stamped or other textured concrete, where grinding is not possible, to profile concrete prior to coating, preparing unsealed concrete surfaces.

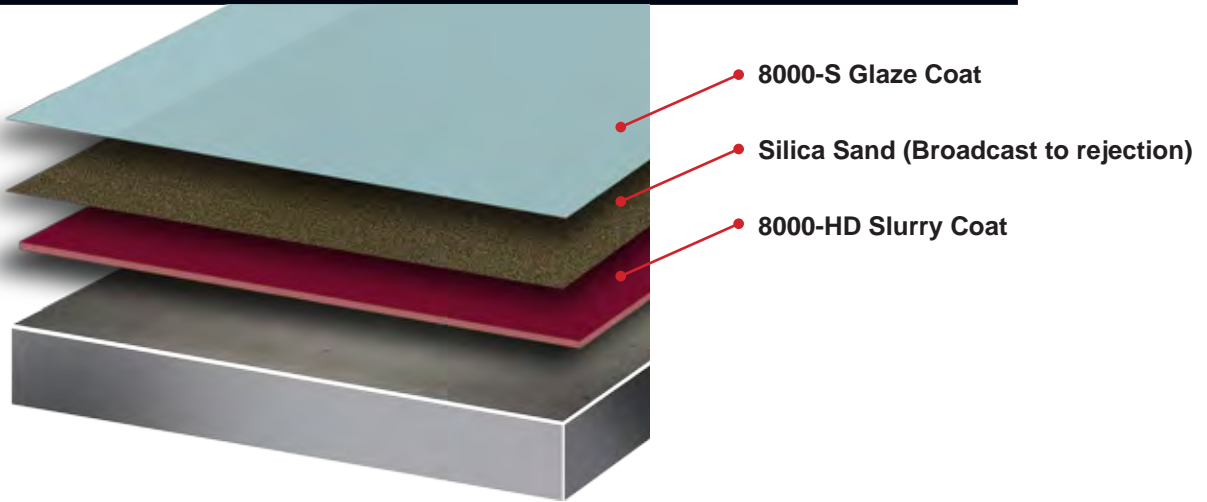
Size: Available in 1 gallon containers

Coverage: 500 sq. ft.

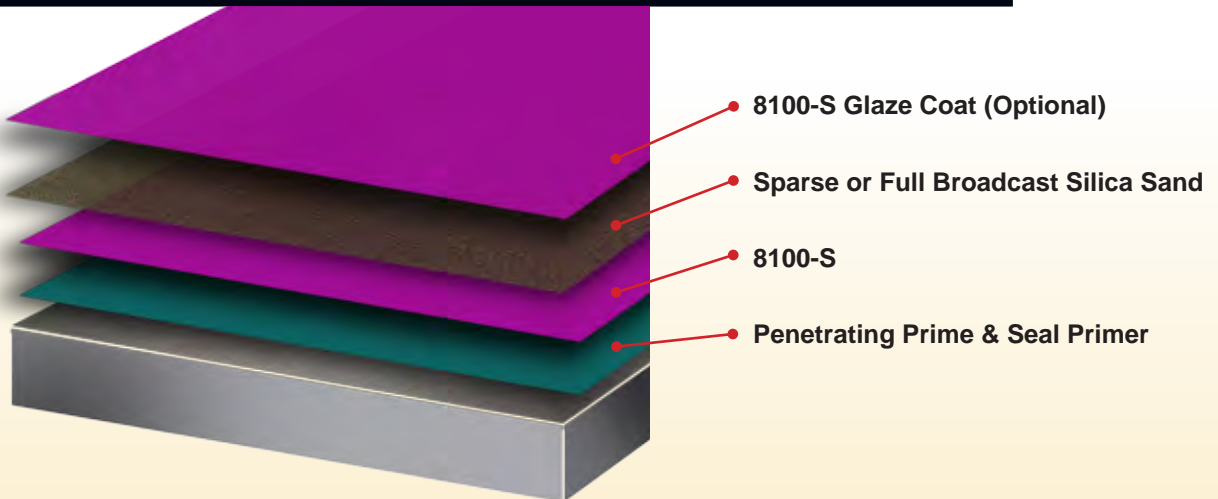


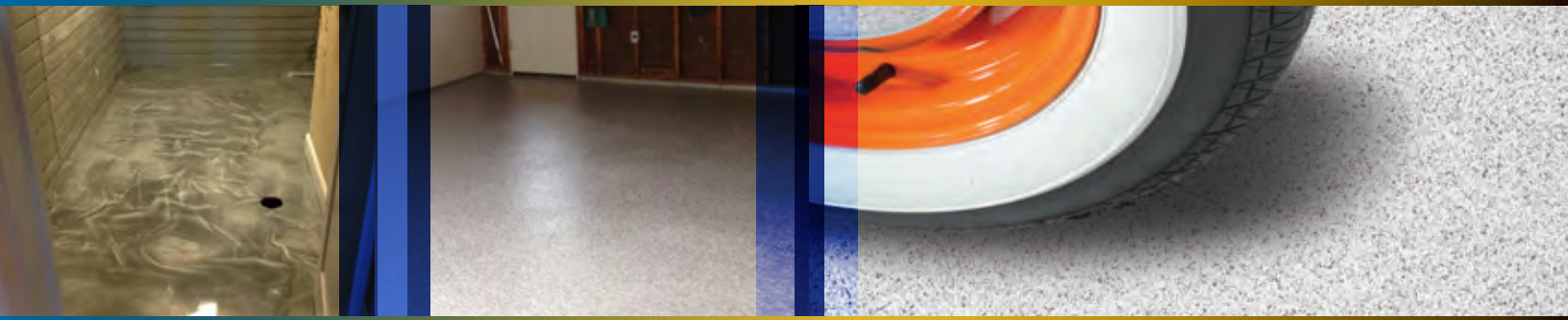


CITADEL PROTECTION SYSTEMS 8000-HD SLURRY SYSTEM

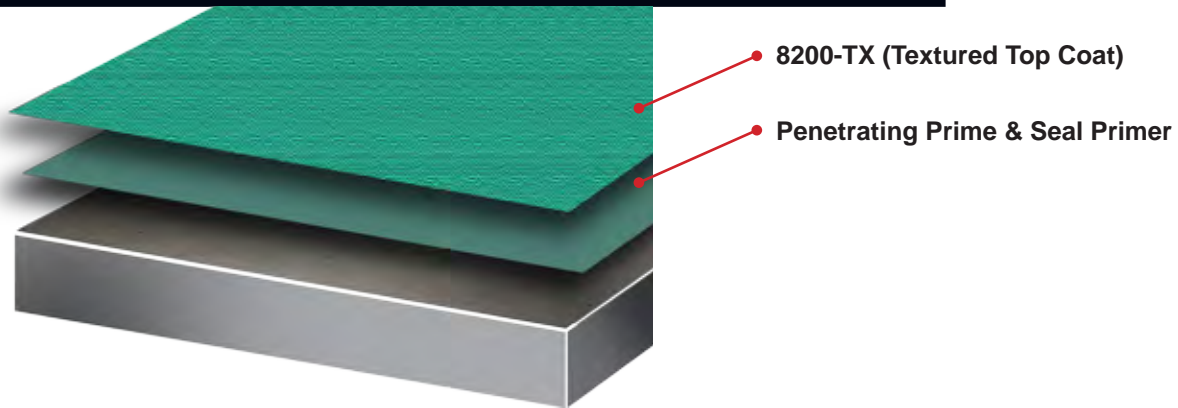


CITADEL PROTECTION SYSTEMS 8100-S SYSTEM

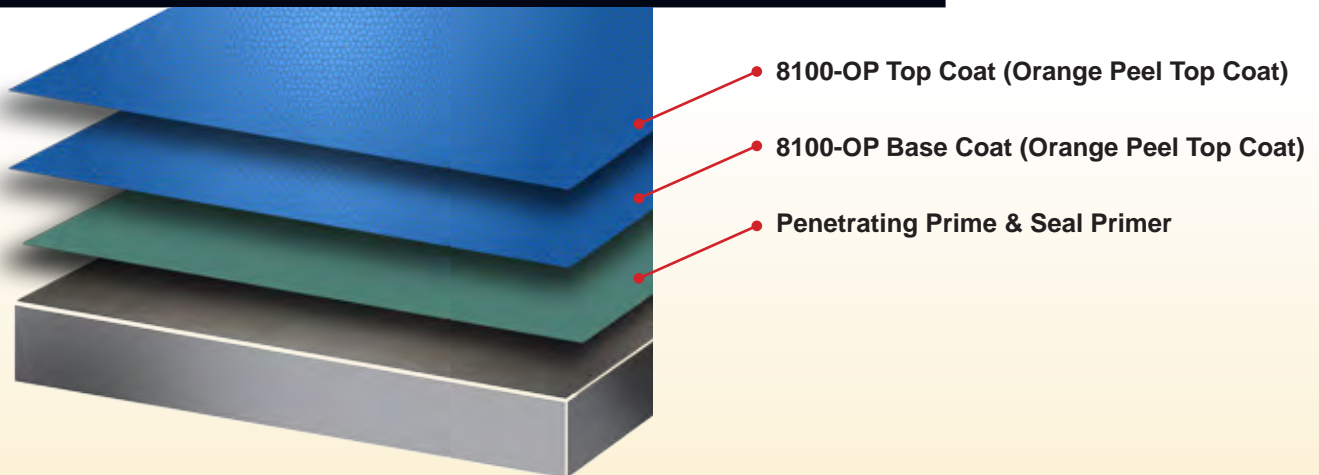




CITADEL PROTECTION SYSTEMS 8200-TX SYSTEM

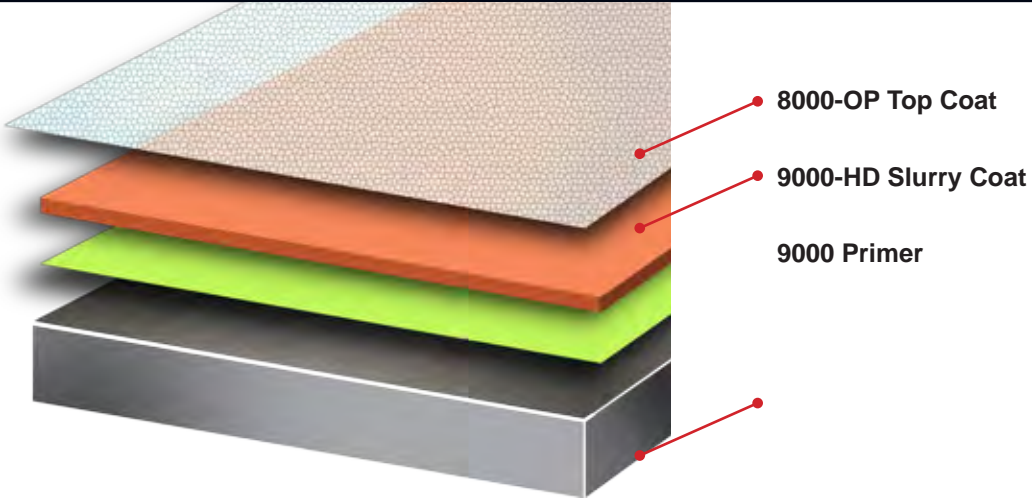


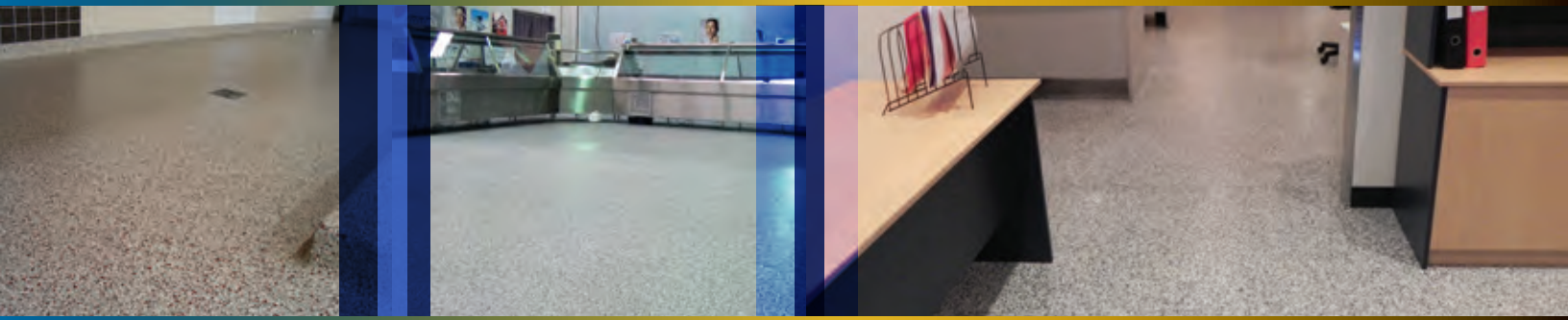
CITADEL PROTECTION SYSTEMS 8100-OP SYSTEM



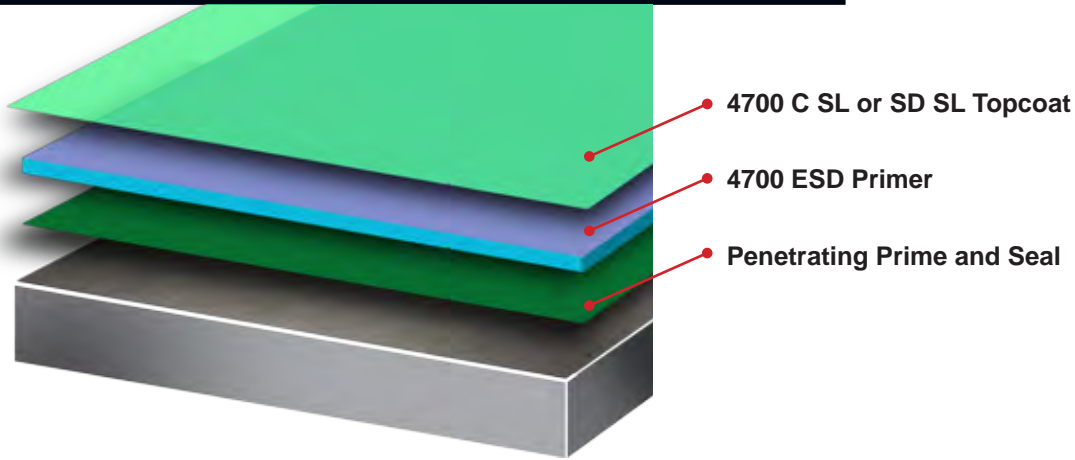


CITADEL PROTECTION SYSTEMS 9000 SYSTEM

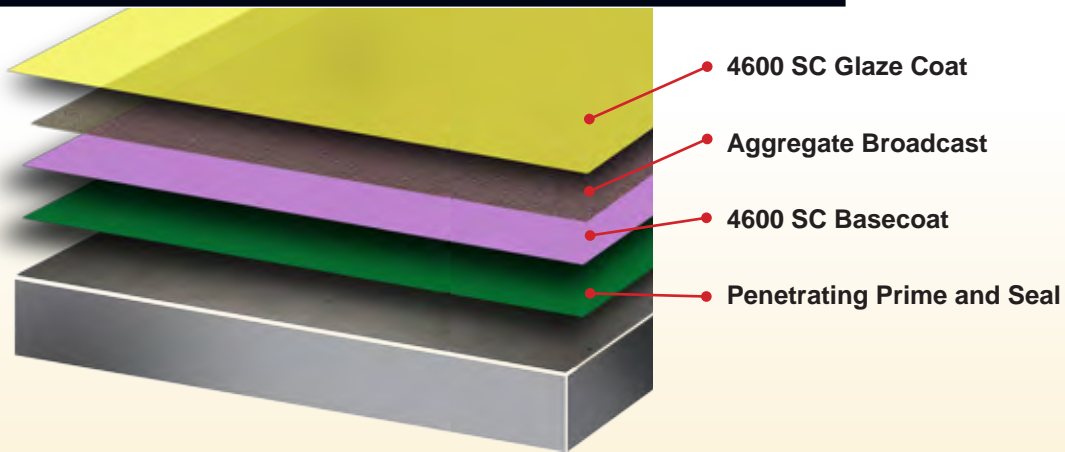




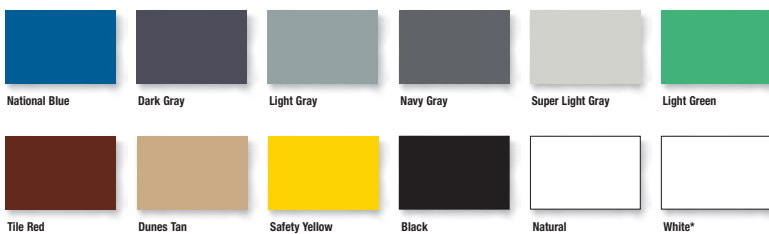
PROTECTION SYSTEMS ESD-THICK SYSTEM



PROTECTION SYSTEMS ESD-THIN SYSTEM

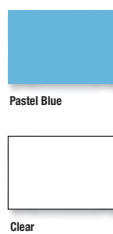


STANDARD PRODUCT COLORS



* White color may vary

ADDITIONAL COLORS: (Not standard in all product lines)





CITADEL 8000 100% SOLIDS EPOXY

For protection against moderate chemicals.

8000-HD is a heavy-duty floor topping designed for moderate chemical resistance and severe mechanical abuse. This 100% solids copolymer resin system is tough and abrasion resistant. Essentially odorless, 8000-HD is suitable for industrial manufacturing and warehousing.

- High degree of abrasion and impact resistance
- Economic, high-build system with fast turnaround and longer service life than competitive products
- Easy to apply, can go over 10 day old, damp concrete
- No primers required; can be top coated for a cleanable finish
- VOC compliant with 100% solids and low odor for use in all regulated areas

8000-HD (Heavy-Duty Topping)

Application Type	Type II	Chemical Resistance	Mild to Moderate
Film Thickness	125–250 mils	Abrasion Resistance	Steel Wheel
Gloss & Color Retention	Good	Impact/Mechanical Abuse Resistance	Severe
Installation Temp Range	65°–90°F (18°–32°C)	Thermal Shock Resistance	Mild

Key Industries/Typical Applications

Heavy-Duty flooring for industrial manufacturing, secondary containment, machine shops, warehouses and other physically abusive environments.

8000-S (Smooth Coating)

Application Type	Type I	Chemical Resistance	Mild to Moderate
Film Thickness	16–50 mils	Abrasion Resistance	Rubber Wheel
Gloss & Color Retention	Good	Impact/Mechanical Abuse Resistance	Mild to Moderate
Installation Temp Range	65°–90°F (18°–32°C)	Thermal Shock Resistance	Mild

Key Industries/Typical Applications

Floor coating for warehousing, light to moderate manufacturing environments and as a topcoat in heavy-duty environments.

8000-OP (Orange Peel Coating)

Application Type	Type I	Chemical Resistance	Mild to Moderate
Film Thickness	6–8 mils/coat	Abrasion Resistance	Rubber Wheel
Gloss & Color Retention	Good	Impact/Mechanical Abuse Resistance	Mild to Moderate
Installation Temp Range	65°–90°F (18°–32°C)	Thermal Shock Resistance	Mild

Key Industries/Typical Applications

Orange peel floor coating for warehousing, light to moderate manufacturing environments, and as a topcoat in heavy-duty environments.



8000-V (Vertical/Wall Coating)

Application Type	Type I	Chemical Resistance	Mild to Moderate
Film Thickness	8–16 mils/coat	Abrasion Resistance	—
Gloss & Color Retention	Good	Impact/Mechanical Abuse Resistance	Mild to Moderate
Installation Temp Range	65°–90°F (18°–32°C)	Thermal Shock Resistance	Mild

Key Industries/Typical Applications

Vertical coating for concrete or block walls in industrial manufacturing, secondary containment, machine shops and warehousing.

8000-CB (Cove Base)

Application Type	Type II	Chemical Resistance	Mild to Moderate
Film Thickness	1/8"–1/4" w/ 1 1/2" radius	Abrasion Resistance	Steel Wheel
Gloss & Color Retention	Good	Impact/Mechanical Abuse Resistance	Severe
Installation Temp Range	65°–90°F (18°–32°C)	Thermal Shock Resistance	Mild

Key Industries/Typical Applications

Cove base for industrial manufacturing, secondary containment, machine shops, warehouses and other physically abusive environments.

CHEMICAL TESTING

Let Citadel test specific chemicals for your conditions and recommend the solution that is right for you. Many of our products have been tested in over 350 chemicals for up to one year immersion. See page 30 for listings.

COLORS

(See colors on page 19)

8000-HD: Standard Product Colors

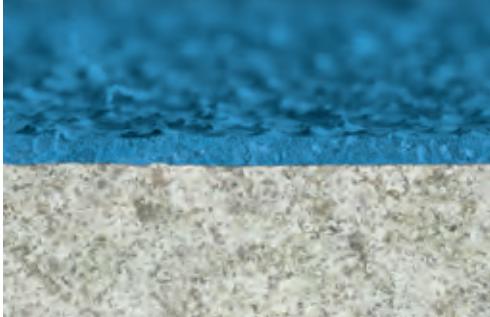
8000-S: Standard Product Colors & Pastel Blue

8000-OP: Standard Product Colors

8000-V: Standard Product Colors

8000-CB: Standard Product Colors





CITADEL 8100 XTRA PREMIUM 100% SOLIDS EPOXY

The top solution for less aggressive environments.

Protect against intermittent chemical spills, splashes and power washings, as well as foot, rubber-wheeled and vehicular traffic with the 8100 Xtra System. In a smooth or orange peel finish, you'll improve the appearance of service areas with excellent color and gloss retention.

- Aesthetically pleasing with extremely high gloss finish and excellent color stability
- For light to moderate chemical resistance, foot traffic, and rubber-wheeled traffic
- Can be combined with other heavy-duty and decorative systems
- Minimal maintenance required
- Can be broadcast for anti-slip finish (sand or aluminum oxide)
- VOC compliant with 100% solids and low odor for use in all regulated areas

8100 SL (Self-Leveling Coating)

Application Type	Type II	Chemical Resistance	Mild to Moderate
Film Thickness	90 mils	Abrasion Resistance	Rubber Wheel
Gloss & Color Retention	Best	Impact/Mechanical Abuse Resistance	Mild
Installation Temp Range	70°-90°F (21°-32°C)	Thermal Shock Resistance	Mild

Key Industries/Typical Applications

Self-leveling floor coating for industrial manufacturing, pharmaceutical and other mild to moderate chemical environments like warehouses, showrooms, aircraft hangars, laboratories, clean rooms, electrical plants and storage areas.

8100 S (Smooth Coating)

Components	Base, Activator	
Turnaround Time	8-12 hours (foot); 24-48 hours (full); 4 days (chemical)	
Primer	Penetrating Prime & Seal Primer	
Sealer	None	
Texture	Smooth	

Application Type	Type I	Chemical Resistance	Mild to Moderate
Film Thickness	16-50 mils	Abrasion Resistance	Rubber Wheel
Gloss & Color Retention	Best	Impact/Mechanical Abuse Resistance	Mild to Moderate
Installation Temp Range	65°-90°F (18°-32°C)	Thermal Shock Resistance	Moderate

Key Industries/Typical Applications

Floor coating for industrial manufacturing, pharmaceutical and other mild to moderate chemical environments like warehouses, showrooms, aircraft hangars, laboratories, clean rooms, electrical plants and storage areas. Also used as a topcoat in heavy-duty environments.



8100 OP (Orange Peel Coating)

Application Type	Type I	Chemical Resistance	Mild to Moderate
Film Thickness	6–8 mils/coat	Abrasion Resistance	Rubber Wheel
Gloss & Color Retention	Best	Impact/Mechanical Abuse Resistance	Mild to Moderate
Installation Temp Range	65°–90°F (18°–32°C)	Thermal Shock Resistance	Moderate

Key Industries/Typical Applications

Orange peel floor coating for industrial manufacturing, pharmaceutical and other mild to moderate chemical environments like warehouses, showrooms, aircraft hangars, laboratories, clean rooms, electrical plants and storage areas. Also used as a topcoat in heavy-duty environments.

8100 V (Vertical/Wall Coating)

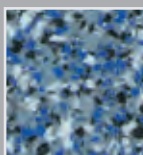
Application Type	Type I	Chemical Resistance	Mild to Moderate
Film Thickness	8–16 mils	Abrasion Resistance	—
Gloss & Color Retention	Best	Impact/Mechanical Abuse Resistance	Mild to Moderate
Installation Temp Range	65°–90°F (18°–32°C)	Thermal Shock Resistance	Moderate

Key Industries/Typical Applications

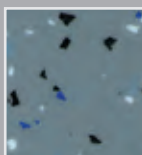
Vertical coating for concrete or block walls in industrial manufacturing, pharmaceutical and other mild to moderate chemical environments like warehouses, showrooms, aircraft hangars, laboratories, clean rooms, electrical plants, containment and storage areas.

DECORATIVE VINYL CHIPS

Vinyl chips can be fully or sparsely broadcasted in both 8000 100% Solids Multi-Purpose Epoxy and 8100 Xtra–Premium 100% Solids Epoxy for decorative finishes.



Full Broadcast



Sparse Broadcast

COLORS

(See colors on page 19)

8100-SL: Standard Product Colors

8100-S: Standard Product Colors & Clear

8100-OP: Standard Product Colors & Clear
Note: excluding Natural

8100-V: Standard Product Colors & Clear
Note: excluding Natural





CITADEL 8200 CHEMICAL RESISTANT EPOXY

A strong solution for severe chemical conditions.

8200-HD offers the most extreme chemical resistance; making it perfect for areas subject to caustic washdowns. 8200-HD also withstands mechanical abuse from steel wheeled traffic. Essentially odorless, 8200-HD is suitable for food and beverage facilities.

- For extremely high chemical resistance, especially for alkalis and acids common to the food & beverage industry (for specific chemicals, refer to chart on page 30)
- Withstands mechanical abuse from steel-wheeled traffic
- Labor saver; high build in a single coat; "Contractor's Choice"
- VOC compliant with 100% solids and low odor for use in all regulated areas
- Can be used over 10 day old, damp concrete
- No primer necessary
- Tested in over 350 chemicals for one year immersion

8200-HD (Heavy-Duty Topping)

Components	Base, Activator, Aggregate	
Turnaround Time	8-10 hours (foot); 12-24 hours (full); 4 days (chemical)	
Primer	None	
Sealer	Optional, None Required	
Texture	Various textures can be achieved by leaving the product uncoated or by using the appropriate topcoat	

Application Type	Type II	Chemical Resistance	Severe
Film Thickness	125-250 mils	Abrasion Resistance	Steel Wheel
Gloss & Color Retention	Good	Impact/Mechanical Abuse Resistance	Severe
Installation Temp Range	65°-90°F (18°-32°C)	Thermal Shock Resistance	Moderate

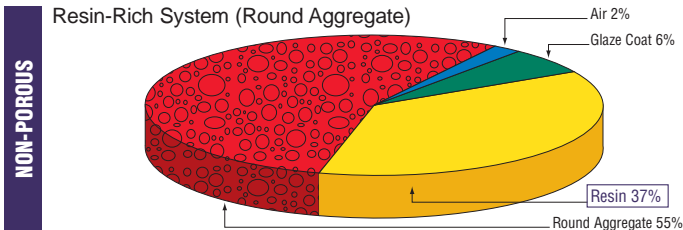
Key Industries/Typical Applications

Heavy-duty flooring for chemical processing, food & beverage and industrial manufacturing environments such as dairies, bottling, meat & poultry processing, breweries & wineries, processing plants, secondary containment, grain processing, trench liners and tank farms.

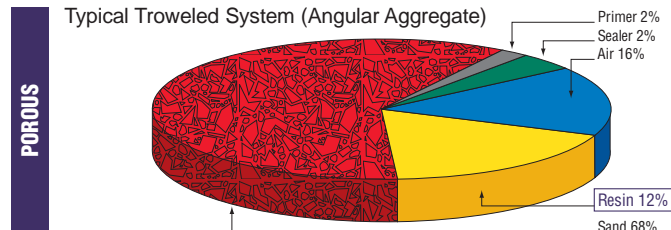
RESIN-RICH VS. TROWELED

CONCRETE PROTECTION SYSTEMS BY CITADEL

Resin-Rich System (Round Aggregate)



Typical Troweled System (Angular Aggregate)



Citadel's resin rich systems contain a much higher ratio of resin-to-aggregate than troweled systems, making it non-porous and exceptionally chemical resistant. Our resin-rich systems use a round aggregate which allows resin to flow between the particles



8200-HDV (Heavy-Duty Vertical Coating)

Application Type	Type II	Chemical Resistance	Severe
Film Thickness	125 mils	Abrasion Resistance	—
Gloss & Color Retention	Good	Impact/Mechanical Abuse Resistance	Severe
Installation Temp Range	65°–90°F (18°–32°C)	Thermal Shock Resistance	Moderate

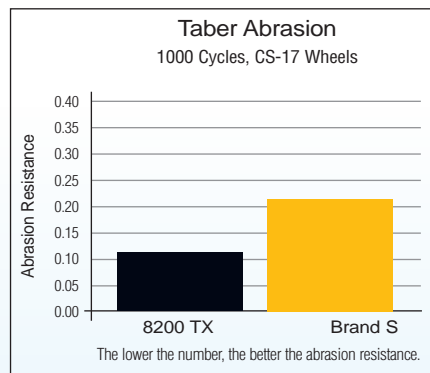
Key Industries/Typical Applications

Heavy-duty vertical coating for concrete or block walls in chemical processing, food & beverage and industrial manufacturing environments such as dairies, bottling, meat & poultry processing, breweries & wineries, processing plants, secondary containment, grain processing, trench liners and tank farms.

8200-TX (Textured Coating)

The TX formula utilizes a proprietary resin system to create a durable, textured, two-component, 100% solids anti-slip floor coating. Count on the advanced technology of Citadel 8200 TX for a textured floor coating that maintains its “like new” look. Ideal applications include high-traffic areas, areas requiring slip resistance or protection against chemicals and abrasion. 8200 TX can be easily combined with other systems, like 9000 System–9000, or with additives like Aluminum Oxide for maximum performance and protection in your busy facility.

- Superior abrasion resistance
- Excellent chemical resistance
- Easy-to-mop and clean skid-resistant surface
- Textured finish minimizes flooring imperfections and provides anti-slip safety
- Can also be used as a vertical finish on concrete blocks



Application Type	Type I	Chemical Resistance	Mild to Moderate
Film Thickness	14–16 mils	Abrasion Resistance	Rubber Wheel
Gloss & Color Retention	Better	Impact/Mechanical Abuse Resistance	Mild to Moderate
Installation Temp Range	65°–90°F (18°–32°C)	Thermal Shock Resistance	Mild to Moderate

Key Industries/Typical Applications

Textured floor coating for institutional, commercial & light manufacturing environments like laboratories, offices, corridors, locker rooms, shower rooms, restaurants, bathrooms, kitchens, cafeterias, schools, manufacturing, pharmaceutical areas & hospitals.

COLORS

(See colors on page 19)

8200-HD:
Standard Product Colors

8200-HDV:
Standard Product Colors

8200-TX:
Standard Product Colors
& Pastel Blue

Note: excluding National Blue,
Light Green, Natural & White

8200-S:
Standard Product Colors

8200-V:
Standard Product Colors

8200-CB:
Standard Product Colors

Troweled systems use an angular aggregate that allows the particles to nest closer together. This nesting causes porosity between the particles.

Choose Citadel's resin-rich systems for seamless protection!





CITADEL 8200 CHEMICAL RESISTANT EPOXY

A strong solution for severe chemical conditions.

8200-S (Smooth Coating)

Application Type	Type I	Chemical Resistance	Moderate to Severe
Film Thickness	16–50 mils	Abrasion Resistance	Rubber Wheel*
Gloss & Color Retention	Better	Impact/Mechanical Abuse Resistance	Mild to Moderate
Installation Temp Range	65°–90°F (18°–32°C)	Thermal Shock Resistance	Moderate

Key Industries/Typical Applications

Floor coating for chemical processing, food & beverage and industrial manufacturing environments such as dairies, bottling, meat & poultry processing, breweries & wineries, processing plants, secondary containment, grain processing, trench liners and tank farms. Also used as a chemically resistant topcoat in heavy-duty and thermal shock environments.

* Except when used as a topcoat in heavy-duty environments

8200-V (Vertical/Wall Coating)

Application Type	Type I	Chemical Resistance	Moderate to Severe
Film Thickness	8–16 mils	Abrasion Resistance	—
Gloss & Color Retention	Better	Impact/Mechanical Abuse Resistance	Mild to Moderate
Installation Temp Range	65°–90°F (18°–32°C)	Thermal Shock Resistance	Moderate

Key Industries/Typical Applications

Vertical coating for concrete or block walls in chemical processing, food & beverage and industrial manufacturing environments such as dairies, bottling, meat & poultry processing, breweries & wineries, processing plants, secondary containment, grain processing, trench liners and tank farms.

8200-CB (Cove Base)

Application Type	Type II	Chemical Resistance	Severe
Film Thickness	1/8"–1/4" w/ 1 1/2" radius	Abrasion Resistance	Steel Wheel
Gloss & Color Retention	Good	Impact/Mechanical Abuse Resistance	Severe
Installation Temp Range	65°–90°F (18°–32°C)	Thermal Shock Resistance	Moderate

Key Industries/Typical Applications

Cove base for chemical processing, food & beverage and industrial manufacturing environments such as dairies, bottling, meat & poultry processing, breweries & wineries, processing plants, secondary containment, grain processing, trench liners and tank farms.





CITADEL 8300 NOVOLAC EPOXY

The ultimate solution for extreme chemical conditions.

The harshest chemicals out there — even 98% sulfuric acid — don't challenge 8300-Plus HD. This Novolac epoxy provides the highest level of protection against the most corrosive industrial chemicals. When applied at a thickness of ¼", 8300-HD withstands steel wheeled traffic and severe mechanical abuse. Don't risk your floor to a non-novolac!

- Premier product for its easy-to-apply viscosity and one coat finish
- Widest degree of chemical resistance out there — from alkalis to acids
- Excellent abrasion resistance
- Can be used over 10 day old, damp concrete
- Contractors prefer our easy-to-apply novolac, half the labor of any other competitive brand
- Tested in over 350 chemicals for one year immersion

8300-HD (Heavy-Duty Topping)

Application Type	Type II	Chemical Resistance	Severe
Film Thickness	125–250 mils	Abrasion Resistance	Steel Wheel
Gloss & Color Retention	Good	Impact/Mechanical Abuse Resistance	Severe
Installation Temp Range	65°–90°F (18°–32°C)	Thermal Shock Resistance	Mild to Moderate

Key Industries/Typical Applications

Heavy-duty flooring for chemical processing, pulp & paper, food & beverage, secondary containment, tank farms, trench liners, sump lining, plating facilities and battery storage areas.

8300-HDV (Heavy-Duty Vertical Coating)

Application Type	Type II	Chemical Resistance	Severe
Film Thickness	125 mils	Abrasion Resistance	—
Gloss & Color Retention	Good	Impact/Mechanical Abuse Resistance	Severe
Installation Temp Range	65°–90°F (18°–32°C)	Thermal Shock Resistance	Mild to Moderate

Key Industries/Typical Applications

Heavy-duty vertical coating for concrete or block walls in chemical processing, pulp & paper, food & beverage, secondary containment, tank farms, trench liners, sump lining, plating facilities and battery storage areas.

8300-S (Smooth Coating)

Application Type	Type I	Chemical Resistance	Severe
Film Thickness	16–50 mils	Abrasion Resistance	Rubber Wheel
Gloss & Color Retention	Better	Impact/Mechanical Abuse Resistance	Mild to Moderate
Installation Temp Range	65°–90°F (18°–32°C)	Thermal Shock Resistance	Mild to Moderate

Key Industries/Typical Applications

Floor coating for chemical processing, pulp & paper, food & beverage, secondary containment, tank farms, trench liners, sump lining, plating facilities and battery storage areas. Also used as a topcoat in heavy-duty environments.



8300-V (Vertical/Wall Coating)

Application Type	Type I	Chemical Resistance	Severe
Film Thickness	8-16 mils	Abrasion Resistance	—
Gloss & Color Retention	Better	Impact/Mechanical Abuse Resistance	Mild to Moderate
Installation Temp Range	65°–90°F (18°–32°C)	Thermal Shock Resistance	Mild to Moderate

Key Industries/Typical Applications

Vertical coating for concrete or block walls in chemical processing, pulp & paper, food & beverage, secondary containment, tank farms, trench liners, sump lining, plating facilities and battery storage areas.

8300-CB (Cove Base)

Application Type	Type II	Chemical Resistance	Severe
Film Thickness	1/8"-1/4" w/ 1 1/2" radius	Abrasion Resistance	Steel Wheel
Gloss & Color Retention	Good	Impact/Mechanical Abuse Resistance	Severe
Installation Temp Range	65°–90°F (18°–32°C)	Thermal Shock Resistance	Mild to Moderate

Key Industries/Typical Applications

Vertical coating for chemical processing, pulp & paper, food & beverage, secondary containment, tank farms, trench liners, sump lining, plating facilities and battery storage areas.

COLORS

(See colors on page 19)

8300-HD: Standard Product Colors

8300-HDV: Standard Product Colors

8300-S: Standard Product Colors

8300-V: Standard Product Colors

8300-CB: Standard Product Colors





CITADEL 8600

45/65 LOW TEMP EPOXY

An effective solution for lower temperature applications.

For lower temperature applications such as meat and poultry plants, 8000- 45/65 HD offers rapid turnaround minimizing your valuable downtime.

- Fast curing at ambient temperatures, normal cure at cold temperatures
- Easy to apply heavy-duty floor topping
- For moderate chemical resistance and severe mechanical abuse
- Abrasion resistant when applied at 1/8"-1/4"
- VOC compliant with 100% solids and low odor for use in all regulated areas

8600-45/65 HD (Low Temp Heavy-Duty Topping)

Application Type	Type II	Chemical Resistance	Mild to Moderate
Film Thickness	125-250 mils	Abrasion Resistance	Steel Wheel
Gloss & Color Retention	Good	Impact/Mechanical Abuse Resistance	Severe
Installation Temp Range	45°-65°F (7°-18°C)	Thermal Shock Resistance	Mild to Moderate

Key Industries/Typical Applications

Heavy-duty flooring for food & beverage, chemical processing, meat & poultry plants, cold storage facilities and outdoor secondary containment.

8600-45/65 HDV (Low Temp Heavy-Duty Vertical Coating)

Application Type	Type II	Chemical Resistance	Mild to Moderate
Film Thickness	125 mils	Abrasion Resistance	—
Gloss & Color Retention	Good	Impact/Mechanical Abuse Resistance	Severe
Installation Temp Range	45°-65°F (7°-18°C)	Thermal Shock Resistance	Mild to Moderate

Key Industries/Typical Applications

Heavy-duty vertical coating for concrete or block walls in food & beverage, chemical processing, meat & poultry plants, cold storage facilities and outdoor secondary containment.

8600-45/65 S (Low Temp Smooth Coating)

Application Type	Type II	Chemical Resistance	Mild to Moderate
Film Thickness	16-50 mils	Abrasion Resistance	Rubber Wheel
Gloss & Color Retention	Good	Impact/Mechanical Abuse Resistance	Mild to Moderate
Installation Temp Range	45°-65°F (7°-18°C)	Thermal Shock Resistance	Mild to Moderate

Key Industries/Typical Applications

Floor coating for food & beverage, chemical processing, meat & poultry plants, cold storage facilities and outdoor secondary containment. Also used as a topcoat in heavy-duty environments.



8600-45/65 V (Low Temp Vertical Coating)

Application Type	Type II	Chemical Resistance	Mild to Moderate
Film Thickness	8-16 mils	Abrasion Resistance	—
Gloss & Color Retention	Good	Impact/Mechanical Abuse Resistance	Mild to Moderate
Installation Temp Range	45°-65°F (7°-18°C)	Thermal Shock Resistance	Mild to Moderate

Key Industries/Typical Applications

Vertical coating for concrete or block walls in food & beverage, chemical processing, meat & poultry plants, cold storage facilities and outdoor secondary containment.

8600-45/65 CB (Low Temp Cove Base)

Application Type	Type II	Chemical Resistance	Mild to Moderate
Film Thickness	1/8"-1/4" w/ 1 1/2" radius	Abrasion Resistance	Steel Wheel
Gloss & Color Retention	Good	Impact/Mechanical Abuse Resistance	Severe
Installation Temp Range	45°-65°F (7°-18°C)	Thermal Shock Resistance	Mild to Moderate

Key Industries/Typical Applications

Cove base for food & beverage, chemical processing, meat & poultry plants, cold storage facilities and outdoor secondary containment.

COLORS

(See colors on page 19)

8600-45/65 HD: Standard Product Colors

8600-45/65 HDV: Standard Product Colors

8600-45/65 S: Standard Product Colors

8600-45/65 V: Standard Product Colors

8600-45/65 CB: Standard Product Colors & Pastel Blue
Note: excluding Dunes Tan





CITADEL 9000 EPOXY MORTAR TOPPING

A durable solution stands in the way of extreme physical abuse.

The steady grind of a forklift in motion or the constant battering from heavy barrels is all in a hard day's work. Resurface spalled concrete or preserve and extend the life of new concrete floors with 9000-HD. This durable, protective topping covers your need for strong, seamless protection when mechanical abrasion and impact are extreme and exposure to chemicals is moderate.

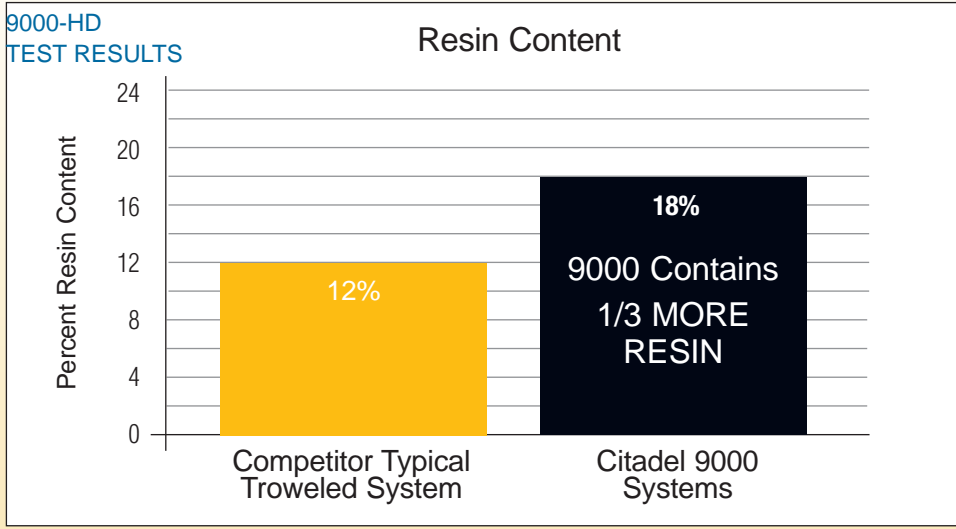
- Application with a screed box and power trowel, or it can be hand troweled in more confined areas
- Level and resurface hazardous areas with seamless construction
- For heavy-duty mechanical, abrasion and impact resistance
- Superior compressive strength with twice the load-carrying capacity of uncoated concrete
- Highest resin content in the industry for superior durability compared to other trowel-applied toppings
- VOC compliant with 100% solids and low odor for use in all regulated areas

9000-HD (Heavy-Duty Topping)

Components	Base, Activator, Aggregate	
Turnaround Time	8-10 hours (foot); 24 hours (full); 4 days (chemical)	
Primer	9000 Primer	
Sealer	8000- OP, 8000- Xtra OP or 8200 TX	
Texture	Various textures can be achieved by using Smooth, Orange Peel, or Textured coatings, 9000 or systems broadcasting vinyl chips	

Application Type	Type II	Chemical Resistance	Mild to Moderate
Film Thickness	186-250 mils	Abrasion Resistance	Steel Wheel
Gloss & Color Retention	Best when topcoated	Impact/Mechanical Abuse Resistance	Severe
Installation Temp Range	65°-90°F (18°-32°C)	Thermal Shock Resistance	Moderate

Key Industries/Typical Applications
Heavy-duty troweled flooring for industrial manufacturing, pharmaceutical, process areas, aisles, packaging (wrap & inventory), primary manufacturing and warehousing.



CONCRETE CHALLENGE

Maximum resistance to physical abuse with an easy to clean surface.

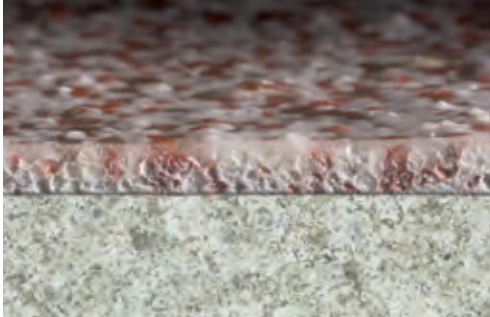
SOLUTION: 9000 System and 8200 System are the perfect blend of labor savings, performance and good looks. 9000's resistance to physical abuse with 8200 TX's easy clean (even with a mop), one-coat application is the winning combination.

Required Systems:
9000 System Primer,
9000 System HD,
8200 System TX

COLORS
(See colors on page 19)

9000-HD:
Standard Product Colors





CITADEL 9600 DECORATIVE QUARTZ

Our most decorative solution combines aesthetics with safety.

Guard against slips and falls with 9600, a decorative coating for concrete protection.

This three-component (base coat, aggregate and sealer) system of decorative quartz blends together to protect the concrete and people around you.

- Range of thickness from 1/16"-1/4" adapts to any need
- Chemical resistance with splash-and-spill protection against many acids, alkalis and solvents
- Can be applied as an anti-slip finish in a single broadcast, or an easy to clean/mop aesthetically pleasing finish with double broadcast
- Non-porous, high-density composition resists bacterial growth and corrosion
- VOC compliance with virtually no odor

9600 SYSTEM COLORS



BC-103



BC-105



BC-109



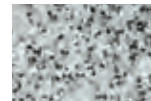
BC-112



BC-117



BC-119



BC-120



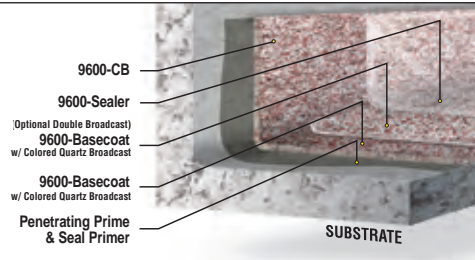
BC-121



BC-122

9600 (Decorative Coating)

Components	Base Coat (Base, Activator), Quartz Aggregate & Sealer
Turnaround Time	16-24 hours (foot); 24-48 hours (full); 4 days (chemical)
Primer	Penetrating Prime & Seal Primer
Sealer	9600 Sealer
Texture	Smooth, High Profile or Low Profile, Orange Peel



Application Type	Type I
Film Thickness	62-125 mils
Gloss & Color Retention	Good
Installation Temp Range	65°-90°F (18°-32°C)

Chemical Resistance	Mild to Moderate
Abrasion Resistance	Rubber Wheel
Impact/Mechanical Abuse Resistance	Moderate
Thermal Shock Resistance	Mild to Moderate

Key Industries/Typical Applications

Decorative floor coating for institutional, commercial and pharmaceutical areas like laboratories, offices, corridors, locker rooms, showrooms, restaurants, bathrooms, kitchens, cafeterias, schools, light manufacturing, and hospitals.

9600-CB (Decorative Cove Base)

Application Type	Type II
Film Thickness	1/8"-1/4" w/ 1 1/2" radius
Gloss & Color Retention	Good
Installation Temp Range	65°-90°F (18°-32°C)

Chemical Resistance	Moderate to Severe
Abrasion Resistance	Rubber Wheel
Impact/Mechanical Abuse Resistance	Severe
Thermal Shock Resistance	Mild to Moderate

Key Industries/Typical Applications

Decorative cove base for institutional, commercial and pharmaceutical areas like laboratories, offices, corridors, locker rooms, showrooms, restaurants, bathrooms, kitchens, cafeterias, schools, light manufacturing, and hospitals.



9600 BASECOAT:
Clear & Super Light Gray

9600 SEALER:
Clear

9600 AGGREGATE:
see 9600 System colors

9600 COVE BASE:
Clear



CITADEL 4600 SC

ELECTROSTATIC DISCHARGE CONTROL DECORATIVE QUARTZ

Aesthetically pleasing ESD control solution.

4600



Commercial, institutional, and industrial facilities that require ESD (electrostatic discharge) control and desire a decorative look will benefit from 9600 SC heavy-duty coating.

This three-component decorative quartz blend resists chemicals, vehicle traffic and impact with 2 to 3 times the load carrying capacity of concrete.

4600-SC (Decorative ESD-Control Coating)

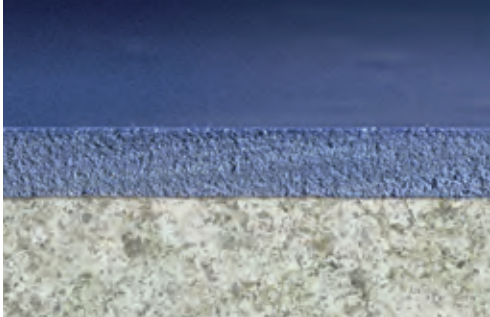
Components	Base Coat (Base, Activator); SC Quartz Aggregate & Sealer (Base, Activator)	
Turnaround Time	12 hours (foot); 24 hours (full); 4 days (chemical)	
Primer	Penetrating Prime & Seal Primer	
Sealer	9600 SC Sealer	
Texture	High Profile, Aggressive Anti-Skid; Low Profile can be achieved by applying two coats of sealer.	

Application Type	Type II	Chemical Resistance	Mild to Moderate
Film Thickness	12-16 mils	Abrasion Resistance	Rubber Wheel
Gloss & Color Retention	Better	Impact/Mechanical Abuse Resistance	Mild to Moderate
Installation Temp Range	65°-90°F (18°-32°C)	Thermal Shock Resistance	Mild

Key Industries/Typical Applications

Decorative electrostatic discharge control base coat for institutional, commercial and pharmaceutical areas like clean rooms, hospitals, automated assembly areas, storage areas, computer control rooms, electronic assembly areas and electronic manufacturing plants.

Contact Technical Service
for more information



CITADEL 4700 ESD CONTROL COATING

Striking solutions to control electrostatic discharge.

Electrostatic discharge causes a shocking \$5 billion in lost profits annually. Protect yourself with Conductive and Static Dissipative floor toppings and coatings. Just walking across the floor can generate as much as 3,000 volts. It takes as little as 10 volts to cause damage to sensitive equipment and products, even ignition of flammable solvents and chemicals. 4700 ESD Control systems provide more effective protection against static and sparking than tile, carpet, and mats:

- Conductive: for areas requiring low resistance (25,000 ohms to 1 megohm @ 500 V based on NFPA 99 test method)
- Static dissipative: for areas where electrostatic charge build-up hinders productivity (1 megohm to 1,000 megohms @ 100 V based on ASTM F test method)
- Seamless surface stays in place, is non-porous, and easy to clean without dusting or waxing
- Two resistance ranges protect against a variety of acids, alkalis and solvents, in addition to physical impact and water absorption

Light to medium service areas in a range of industries, where foot and rubber-wheeled traffic are typical, can benefit from the static dissipative abilities of 4700 SD S coatings.

4700-C SL (Self-Leveling Conductive Coating)

Components	100% Solids Epoxy	
Turnaround Time	8-12 hours (foot); 72 hours (full); 4 days (chemical)	
Primer	Penetrating Prime & Seal Primer and Primer ESD	
Sealer	None	
Texture	Smooth	

Application Type	Type II	Chemical Resistance	Mild to Moderate
Film Thickness	90-105 mils	Abrasion Resistance	Rubber Wheel
Gloss & Color Retention	Better	Impact/Mechanical Abuse Resistance	Mild to Moderate
Installation Temp Range	70°-90°F (21°-32°C)	Thermal Shock Resistance	Mild

Key Industries/Typical Applications
 Self-leveling conductive coating for potentially explosive areas in industrial manufacturing, institutional and electronics like pyrotechnics processing areas, powdered production plants and airbag plants.

CONCRETE CHALLENGE

Electronics assembly area experienced electrostatic discharge spikes that devastated production and profits. Must avoid slip and fall hazards from mats/carpets.

SOLUTION: 4700 System-ESD Control Coatings protect your products from the devastation caused by ESD. 4700 System can be customized for your critical operations. 4700 System offers seamless, wall to wall protection with performance, durability, easy maintenance, chemical and fire resistance. 4700 System puts you back in control of your profits!

Required Systems: Contact Citadel's Flooring Specialists for a customized ESD control coating recommendation.



4700-SD SL (Self-Leveling Static Dissipative Coating)

Application Type	Type II	Chemical Resistance	Mild to Moderate
Film Thickness	90-105 mils	Abrasion Resistance	Rubber Wheel
Gloss & Color Retention	Better	Impact/Mechanical Abuse Resistance	Mild to Moderate
Installation Temp Range	70°-90°F (21°-32°C)	Thermal Shock Resistance	Mild

Key Industries/Typical Applications

Self-leveling static dissipative coating for industrial manufacturing, institutional and electronics like clean rooms, hospitals, automated assembly areas, computer control rooms, semi-conductor and relay assembly areas, printing press areas and electronic manufacturing plants.

4700-SD S (Static Dissipative Coating)

Application Type	Type II	Chemical Resistance	Mild to Moderate
Film Thickness	16 mils	Abrasion Resistance	Rubber Wheel
Gloss & Color Retention	Good	Impact/Mechanical Abuse Resistance	Mild
Installation Temp Range	70°-90°F (21°-32°C)	Thermal Shock Resistance	Mild

Key Industries/Typical Applications

Static dissipative floor coating for industrial manufacturing, institutional and electronics like clean rooms, hospitals, automated assembly areas, computer control rooms, semi-conductor and relay assembly areas, printing press areas and electronic manufacturing plants.

ALSO AVAILABLE:

Primer ESD
(for C SL and SD SL): Black

WB Epoxy Primer ESD
(for SD S): Black

4600 SYSTEM SC COLORS



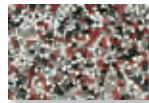
BCSC-103



BCSC-108



BCSC-112



BCSC-113



BCSC-119



BCSC-120



BCSC-122



BCSC-123



4700-C SL & 4700-SD SL: Standard Product Colors

4700-SD S: National Blue, Dark Gray,
Light Gray, Navy Gray, Light Green, Tile Red





CITADEL EPOXY GROUTS

Precise alignment and mounting of heavy machinery.

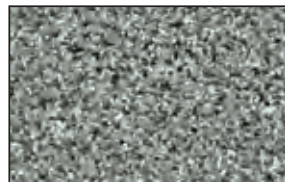
Vibration, rotation, shifting, and sheer weight are some of the forces that deteriorate the concrete of every facility. Epoxy Grouts are essential wherever rotating equipment, precision aligned machinery, heavy stationary tanks, rails, or load-bearing plates are installed. By creating stable foundations, machinery, equipment, and the surrounding concrete can perform at their peak for years of productive service.

- High tensile, flexural and compressive strengths keep valuable machinery and equipment perfectly aligned for years of service
- Low-exotherm cure minimizes shrinkage, ensuring full bearing where contact is maintained
- Low-dusting aggregate provides a cleaner work area and a safer work environment
- Fast curing can accept full service in as little as 6 hours, minimizing downtime
- High flowability can be poured to form under hard-to-reach foundations and pump pads

EPOXY GROUT GP: THE GENERAL PURPOSE SOLUTION

Intended for applications where machinery and equipment impart large dynamic loads to their foundations, this three-component grout consists of epoxy resin, amine hardener, and specially mixed low-dusting aggregate.

- Medium Gray only
- .44 cubic foot kit or 1.75 cubic foot kit



Application Type	Type II	Chemical Resistance	Moderate
Film Thickness	Varies	Abrasion Resistance	Steel Wheel
Gloss & Color Retention	—	Impact/Mechanical Abuse Resistance	Severe
Installation Temp Range	65°–90°F (18°–32°C)	Thermal Shock Resistance	Mild to Moderate

Key Industries/Typical Applications

Flooring for chemical processing areas, food & beverage areas, heavy manufacturing areas, petrochemical, foundations, vessels & tanks, power transmission, pulp & paper plants, metal refining/mining, petroleum refining, turbines, rails, compressors, bearing plates, conveyor supports, cooling towers, engines, and pumps.

PHYSICAL PROPERTIES & COMPETITIVE REFERENCE

	Epoxy Grout GP	A	Competitors B	C
Compressive Strength (psi)	14,600	14,000	10,400	15,600
Flexural Strength (psi)	5,500	4,500	4,000	8,080
Tensile Strength (psi)	2,700	2,200	2,100	2,140
Thermal Coefficient of Friction (in/in/°F)	3.2 E ⁻⁵	1.9 E ⁻⁵	2.1 E ⁻⁵	7.6 E ⁻⁵
Linear Shrinkage	0.155%	0.05%	0.063%	--
Peak Exotherm, °F (at 72°F [22°C])	130°F [55°C]	152°F [67°C]	165°F [74°C]	133°F [56°C]
Modulus of Elasticity (psi)	2.16 E ⁶	2.1 E ⁶	--	2.4 E ⁶
Set Time (hours)	2:10	--	--	--

OverDrive®

This non-porous epoxy grout rebuilds severely eroded concrete floors with tremendous bonding and load-bearing properties exceeding the tensile and sheer strength of the concrete itself. Can be applied to damp, 10-day old concrete, curing in only 6-8 hours. Application Type II.

Where faster turn-around and reduced downtime are requirements, this three-component grout has the same qualities as Epoxy Grout GP, but with a shorter set time of under two hours.

- Dark Blue only
- .44 cubic foot kit

EPOXY GROUT QS: THE QUICK SET SOLUTION

Application Type	Type II
Film Thickness	Varies
Gloss & Color Retention	—
Installation Temp Range	65°–90°F (18°–32°C)

Key Industries/Typical Applications

Flooring for chemical processing areas, food & beverage areas, heavy manufacturing areas, petrochemical, foundations, vessels & tanks, power transmission, pulp & paper plants, metal refining/mining, petroleum refining, turbines, rails, compressors, bearing plates, conveyor supports, cooling towers, engines, and pumps.

PHYSICAL PROPERTIES & COMPETITIVE REFERENCE

	Epoxy Grout QS	Competitors D
Compressive Strength (psi)	18,900	19,000
Flexural Strength (psi)	5,780	--
Tensile Strength (psi)	2,870	2,000
Thermal Coefficient of Friction (in/in/°F)	1.5 E ⁻⁵	1.5 E ⁻⁵
Linear Shrinkage	0.065%	0.01%
Peak Exotherm, °F (at 72°F [22°C])	174°F [79°C]	220+°F [105+°C]
Modulus of Elasticity (psi)	2.62 E ⁶	--
Set Time (hours)	1:45	--

Where heavy-duty chemical resistance is required in addition to structural characteristics, as in pulp and paper industries, Epoxy Grout CR provides the same chemical protection as 8200 Plus®. It can withstand up to 98% sulfuric acid and hundreds of other harsh chemicals.

- Dark Red only
- .44 cubic foot kit

EPOXY GROUT CR: THE CORROSION RESISTANT SOLUTION

Application Type	Type II	Chemical Resistance	Severe
Film Thickness	Varies	Abrasion Resistance	Steel Wheel
Gloss & Color Retention	—	Impact/Mechanical Abuse Resistance	Severe
Installation Temp Range	65°–90°F (18°–32°C)	Thermal Shock Resistance	Mild to Moderate

Key Industries/Typical Applications

Flooring for chemical processing areas, food & beverage areas, heavy manufacturing areas, petrochemical, foundations, vessels & tanks, power transmission, pulp & paper plants, metal refining/mining, petroleum refining, turbines, rails, compressors, bearing plates, conveyor supports, cooling towers, engines, and pumps.

PHYSICAL PROPERTIES & COMPETITIVE REFERENCE

	Epoxy Grout CR	Competitors E
Compressive Strength (psi)	16,100	16,000
Flexural Strength (psi)	5,740	5,000
Tensile Strength (psi)	2,940	2,200
Thermal Coefficient of Friction (in/in/°F)	1.9 E ⁻⁵	1.5 E ⁻⁵
Linear Shrinkage	0.025%	--
Peak Exotherm, °F (at 72°F [22°C])	160°F [71°C]	--
Modulus of Elasticity (psi)	2.51 E ⁶	1.5 E ⁶
Set Time (hours)	1:40	--

EPOXY GROUT COLORS



Epoxy Grout QS
Dark Blue



Epoxy Grout GP
Medium Gray



Epoxy Grout CR
Dark Red





CITADEL EPOXY PRIMERS GREEN CONCRETE PRIME & SEAL

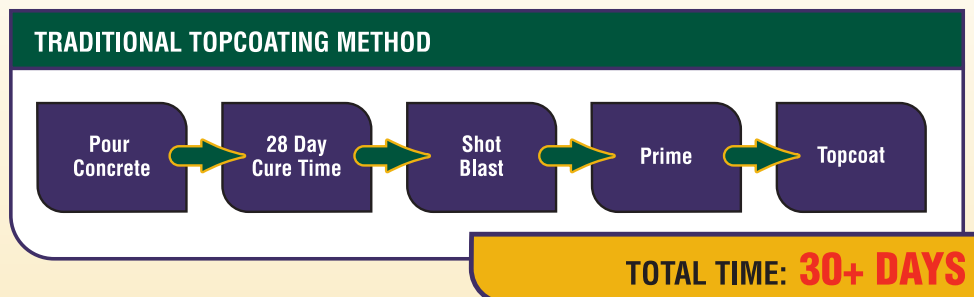
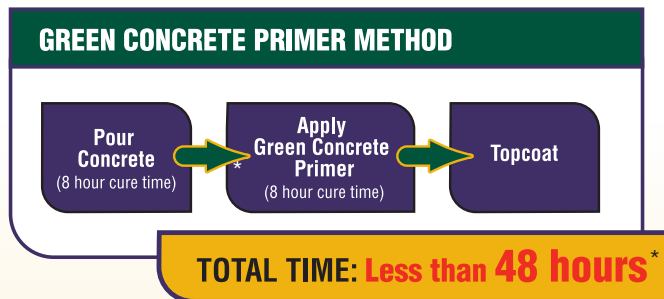
From pour to finished floor in less than 48 hours.

Easy. Time saving. And no shot blasting required. Green Concrete Prime & Seal combines the functions of a curing agent, sealer and permanent primer — all in one. It can be applied up to 8 hours after pouring the slab* and is ready for topcoating after only an additional 8 hours of dry time, allowing you to go from green concrete to a finished floor in less than 48 hours.

- Performs like a curing compound, sealer and primer all in one
- Applies easily, dries quickly, and does not have to be removed prior to recoating like traditional sealers
- One coat application
- Wide topcoating window — same day or up to 28 days
- Strengthens concrete
- Eliminates the cost of curing compounds and labor to apply them
- Eliminates the cost of 28 days of downtime
- Eliminates the cost of shot blasting, estimated at \$.30-.50 per square foot
- Carpet, tile and floor coatings can be applied directly on cured floor
- Passes the test for use as a Concrete Curing Compound (ASTM C156-98 for Water Retention)

Application Type	Type II
Film Thickness	8 mils
Gloss & Color Retention	—
Installation Temp Range	65°–90°F (18°–32°C)

Key Industries/Typical Applications
New construction, plant renovations.



* Green concrete can be applied as soon as concrete can be walked on without marring (typically 4-16 hours post pour depending on environmental conditions).



TurboPrime™

Prime. Seal. Dustproof. In no time.

This two-component, easy-to-apply high-solids epoxy primer protects against dust, water and mild chemicals. Can be used as a concrete primer or stand-alone sealer. Fast cure for recoat in 1/2 to 2 hours, even in colder environments. Slight odor. VOC compliant with <100 g/l. Available in Amber Clear. Application Type I.



Prime & Seal™ Primer

This two-component, virtually 100% solids epoxy resin polymer seals the substrate and securely bonds it to the floor coating or patching materials. May be used before applying floor coatings, toppings, patching materials, or alone as a concrete sealer. Exceeds the tensile and shear strength of the concrete itself, and cures in only 6-8 hours. Available in Natural, Light Gray and Super Light Gray. Application Type I.

Penetrating Prime & Seal™ Primer

This two-component, virtually 100% solids epoxy resin polymer shares the same strong qualities of our Prime & Seal Primer. Designed for covering worn concrete, our penetrating formula seals small voids and pinholes to reduce bubbles in the topcoat. Available in Natural, Light Gray and Super Light Gray.

Application Type	Type I
Film Thickness	8 mils MAX.
Installation Temp Range	65°-90°F (18°-32°C)
Chemical Resistance	Mild to Moderate
Abrasion Resistance	Rubber Wheel
Impact/Mechanical Abuse Resistance	Mild to Moderate



Proper prep, patch & repair is critical to successful flooring applications!





CPS CHEMICAL RESISTANCE

BASED ON ONE YEAR IMMERSION TESTING

- ▲ **Continuous Immersion**
 Suitable for continuous immersion in that chemical (based on **ONE YEAR** testing) to assure unlimited service life.
- **Short-Term Exposure**
 Suitable for short-term exposure to that chemical such as secondary containment (72 hours) or splash and spill (immediate clean-up).
- **Not Suitable**
 Not suitable for any exposure to that chemical.

This chart shows chemical resistance of our various topping materials (90 mils – 1/4"). These ratings are based on temperatures being ambient. At higher temperatures, chemical resistance may be effected. When chemical exposure is minimal to non-existent, a 9000 System–9000-HD or 4600 System– HD may be used.

Resistance data is listed with the assumption that the material has properly cured for at least four days, at recommended temperatures, prior to any chemical exposure. If no rating is shown, consult Technical Services. Chemical resistance of 8500 System–8200 MC, which is intended for resistance to some very specific solvents, is listed on page 34.

Let Citadel test specific chemicals for your conditions and recommend the solution that is right for you.

APPEARANCE NOTE:

In some cases, exposure to harsh chemicals may cause a color or gloss change in the flooring material, but will not affect the material's ability to protect or its performance characteristics.

The resistance chart on these pages rates performance and protection only. If aesthetics after exposure are also important, consult Citadel Technical Services during the selection process.

CHEMICAL	8300 SYSTEM	8200 SYSTEM	8000 SYSTEM
Acetic Acid (0-15%)	●	■	■
Acetonitrile	▲	▲	●
Acetone (0-20%)	▲	▲	▲
Acetone (20-30%)	▲	▲	●
Acetone (30-50%)	▲	●	■
Acetone (50-100%)	●	■	■
Acrylamide (0-50%)	▲	▲	▲
Adipic Acid Solution	▲	▲	▲
Alcohol, Isopropyl	▲	▲	▲
Alcohol, Ethyl	▲	▲	●
Alcohol, Methyl	▲	▲	■
Allyl Chloride	▲	▲	■
Allylamine (0-20%)	▲	▲	■
Allylamine (20-30%)	▲	●	■
Allylamine (30-50%)	●	●	■
Aluminum Bromide	▲	▲	-
Aluminum Chloride	▲	▲	-
Aluminum Fluoride (0-25%)	▲	▲	-
Aluminum Hydroxide	▲	▲	▲
Aluminum Iodide	▲	▲	-
Aluminum Nitrate	▲	▲	-
Aluminum Sodium Chloride	▲	▲	-
Aluminum Sulfate	▲	▲	▲
Alums	▲	▲	▲
2-Aminoethoxyethanol	●	●	●
Ammonia – Wet	▲	▲	-
Ammonium Benzoate	▲	▲	-
Ammonium Chloride	▲	▲	▲
Ammonium Chlorostanate	▲	▲	-
Ammonium Fluoride (0-25%)	▲	▲	-
Ammonium Hydroxide	▲	▲	▲
Ammonium Iodate	▲	▲	-
Ammonium Iodide	▲	▲	-
Ammonium Nitrate	▲	▲	▲
Ammonium Oxalate	▲	▲	-
Ammonium Phosphate	▲	▲	-
Ammonium Silicate	▲	▲	-
Ammonium Sulfate	▲	▲	▲
Ammonium Sulfide	▲	▲	-
Ammonium Trichloride	▲	▲	-
Aniline	●	●	●
Aniline Hydrochloride	▲	▲	●
Anisole	▲	●	■
Arsenic Acid (0-75%)	●	●	●
Barium Bromide	▲	▲	▲
Barium Carbonate	▲	▲	▲
Barium Chloride	▲	▲	▲
Barium Citrate	▲	▲	-
Barium Dichromate	▲	▲	-
Barium Hydroxide (0-10%)	▲	▲	▲
Barium Iodate	▲	▲	-
Barium Iodide	▲	▲	-
Barium Nitrate	▲	▲	▲
Barium Nitrite	▲	▲	-

CHEMICAL	8300 SYSTEM	8200 SYSTEM	8000 SYSTEM
Barium Oxalate	▲	▲	-
Barium Sulfate	▲	▲	▲
Barium Sulfide	▲	▲	-
Barium Sulfite	▲	▲	-
Beer	▲	▲	▲
Benzene	▲	●	■
Benzene Sulfonic Acid	▲	▲	-
Benzoic Acid	▲	▲	▲
Benzyl Alcohol	▲	●	●
Beverages – Carbonated	▲	▲	▲
Bismuth Oxochloride	▲	▲	●
Black Liquor	▲	▲	-
Bleach (0-6%)	▲	▲	▲
Bleach Liquor	▲	▲	-
Blood	▲	▲	▲
Borax	▲	▲	▲
Boric Acid	▲	▲	▲
Bromic Acid	▲	▲	-
Bromine Water	▲	▲	-
Butadiene	▲	▲	-
Butanol	▲	▲	▲
Butyl Acetate	▲	▲	■
Butyl Benzoate	▲	▲	●
Butyl Cellosolve	▲	▲	●
Butyl Mercaptan	●	●	-
Cadmium Bromate	▲	▲	-
Cadmium Bromide	▲	▲	-
Calcium Bisulfite	▲	▲	▲
Calcium Bromate	▲	▲	-
Calcium Bromide	▲	▲	-
Calcium Carbonate	▲	▲	▲
Calcium Chlorate	▲	▲	-
Calcium Chloride	▲	▲	▲
Calcium Citrate	▲	▲	-
Calcium Hydroxide (0-50%)	▲	▲	▲
Calcium Hypochlorite (0-20%)	▲	▲	●
Calcium Iodide	▲	▲	-
Calcium Nitrate	▲	▲	▲
Calcium Nitrite	▲	▲	-
Calcium Oxochloride	▲	▲	●
Calcium Phosphate	▲	▲	-
Calcium Sulfate	▲	▲	▲
Calcium Thiosulfate	▲	▲	-
Caprolactam	●	●	■
Carbon Disulfide	▲	●	■
Carbon Tetrachloride	▲	▲	●
Carbonic Acid	▲	▲	▲
Castor Oil	▲	▲	▲
Chlorine – Dry Gas	▲	▲	-
Chlorine Water – All	▲	▲	-
Chlorine – Wet Gas	▲	▲	-
Chlorobenzene	▲	●	■
Chlorostannic Acid	▲	▲	-
Chromated Copper Arsenate (0-50%)	▲	▲	●
Chrome Plating – Hard	▲	▲	-
Chromic Acid (0-10%)	▲	▲	▲
Chromic Acid (10-66%)	●	■	■
Chromic Sulfate	▲	▲	-
Chromous Chloride	▲	▲	-
Chromous Iodide	▲	▲	-

CHEMICAL	8300 SYSTEM	8200 SYSTEM	8000 SYSTEM
Citric Acid	▲	▲	▲
Copper Chloride	▲	▲	▲
Copper Fluoride	▲	▲	-
Copper Nitrate	▲	▲	▲
Copper Sulfate	▲	▲	▲
3-Cresol	▲	●	■
Creosote	▲	▲	▲
Crude Oil – Sour	▲	▲	▲
Crude Oil – Sweet	▲	▲	▲
Cupric Bromate	▲	▲	-
Cupric Bromide	▲	▲	-
Cupric Sulfate	▲	▲	▲
Cuprous Sulfite	▲	▲	-
Cuprous Thiocyanate	▲	▲	-
Cyclohexane	▲	▲	▲
Cyclohexylamine	●	●	■
Cyclopentane	▲	▲	▲
Detergents – All	▲	▲	▲
Diacetone Alcohol	▲	▲	-
Diallylamine	●	●	■
Dichlorobenzene, Ortho	▲	▲	●
1, 4-Dichloro-2-butene	▲	●	■
3, 4-Dichloro-1-butene	▲	■	●
Dicyclopentadiene	▲	▲	●
1, 4-Dioxane	●	●	■
Diesel Fuel	▲	▲	▲
Diethylene Glycol	▲	▲	-
N, N-Dimethylaniline	▲	▲	■
N, N-Dimethylcyclohexylamine	▲	▲	●
Dimethyl Phthalate	▲	▲	▲
Dimethyl Sulfate	▲	▲	▲
Diethyl Phthalate	▲	▲	▲
Di-tert-Butyl Peroxide	▲	▲	▲
Dursban	▲	▲	▲
Ethanolamine	●	●	●
Ether	▲	▲	▲
Ethyl Acetate	▲	▲	■
Ethyl Acrylate	▲	▲	●
Ethyl Cellosolve	▲	▲	■
Ethylene Glycol	▲	▲	▲
Ethyl Hexanoate	▲	▲	▲
Ethyl Hexanol	▲	▲	■
Ethyl Lactate	▲	▲	●
Ethylmorpholine	▲	▲	-
Fat	▲	▲	▲
Fatty Acids	▲	▲	▲
Ferric Bromide	▲	▲	-
Ferric Chloride	▲	▲	▲
Ferric Formate	▲	▲	-
Ferric Nitrate	▲	▲	-
Ferric Oxalate	▲	▲	-
Ferric Sulfate	▲	▲	▲
Ferric Sulfide	▲	▲	-
Ferric Thiocyanate	▲	▲	-
Ferrous Chloride	▲	▲	▲
Ferrous Chloroplatinate	▲	▲	-
Ferrous Ferricyanide	▲	▲	-
Ferrous Fluoride	▲	▲	-
Ferrous Formate	▲	▲	-
Ferrous Iodide	▲	▲	-



CHEMICAL RESISTANCE

CHEMICAL	8300 SYSTEM	8200 SYSTEM	8000 SYSTEM
Ferrous Perchlorate	▲	▲	-
Ferrous Potassium Oxalate	▲	▲	-
Ferrous Sulfate	▲	▲	▲
Ferrous Thiocyanate	▲	▲	-
Ferrous Thiosulfate	▲	▲	-
Fluoboric Acid (0-50%)	▲	▲	▲
Fluosilicic Acid (0-32%)	▲	▲	-
Foam Chemical – AFFF	▲	▲	▲
Formaldehyde (0-40%)	▲	▲	●
Formic Acid (0-10%)	●	■	■
Freon	▲	▲	-
Fumaric Acid (0-5.5%)	▲	▲	■
Funginex	▲	▲	▲
Gasoline, Refined – All	▲	▲	▲
Glucose	▲	▲	▲
Glycerine	▲	▲	▲
Glycol Ether PM	▲	▲	●
Glycol Ether PM Acetate	▲	▲	▲
Gyloxal	▲	▲	●
Heptane	▲	▲	▲
Hydrazine (35% Catalyzed)	▲	▲	-
Hydraulic Fluid	▲	▲	▲
Hydrobromic Acid (0-50%)	▲	▲	●
Hydrochloric Acid (0-37%)	▲	▲	▲
Hydrofluoric Acid (0-20%)	●	●	●
Hydrogen Peroxide (0-10%)	●	●	●
Hydrogen Peroxide (10-35%)	●	●	■
Hydrogen Sulfide – Aqueous	▲	▲	-
Hydroquinone (0-7%)	▲	▲	▲
Hypochlorous Acid (0-10%)	▲	▲	-
Isophorone	▲	▲	-
Isopropyl Biphenyl	▲	▲	▲
Jet Fuel	▲	▲	▲
Kerosene	▲	▲	▲
Lactic Acid (0-10%)	▲	▲	▲
Lactic Acid (10-20%)	▲	▲	●
Lactic Acid (20-40%)	●	●	■
Lactic Acid (40-88%)	●	■	■
Lard	▲	▲	▲
Lauric Acid	▲	▲	-
Lead Acetate	▲	▲	-
Lead Fluoborate (0-48%)	▲	▲	-
Lead Persulfate	▲	▲	-
Levulinic Acid (0-25%)	▲	▲	-
d-Limonene	▲	▲	▲
Lithium Acetate	▲	▲	-
Lithium Nitrate	▲	▲	-
Lithium Sulfide	▲	▲	-
Magnesium Acetate	▲	▲	-
Magnesium Bromide	▲	▲	-
Magnesium Carbonate	▲	▲	-
Magnesium Chloride	▲	▲	-
Magnesium Hydroxide	▲	▲	-
Magnesium Nitrate	▲	▲	-
Magnesium Perchlorate	▲	▲	-

CHEMICAL	8300 SYSTEM	8200 SYSTEM	8000 SYSTEM
Magnesium Sulfate	▲	▲	-
Magnesium Thiosulfate	▲	▲	▲
Maleic Acid (100%)	▲	▲	-
Mercurous Nitrate	▲	▲	-
Mercury	▲	▲	-
Methacrylic Acid	●	●	■
Methyl Acetate	▲	●	■
Methyl Cellosolve	▲	■	■
Methyl Ethyl Ketone	●	■	■
Methyl Ethyl Ketone Peroxide (38%)	▲	●	■
Methyl Formate	▲	■	■
Methyl Isobutyl Carbitol	▲	▲	-
Methyl Isobutyl Ketone	▲	▲	▲
Methyl Lactate	▲	▲	●
Methyl Methacrylate	▲	▲	-
Mineral Oils	▲	▲	▲
Mineral Spirits	▲	▲	▲
Molasses	▲	▲	▲
Molybdenum Oxybromide	▲	▲	-
Molybdenum Tetrabromide	▲	▲	-
Molybdenum Oxychloride	▲	▲	-
Morpholine (0-50%)	▲	▲	●
Morpholine (50-100%)	●	■	■
Naphthalene	▲	▲	-
Naphthas	▲	▲	-
Nickel Bromide	▲	▲	-
Nickel Chloride	▲	▲	-
Nickel Formate	▲	▲	-
Nickel Nitrate	▲	▲	▲
Nickel Potassium Cyanide	▲	▲	-
Nitric Acid (0-15%)	▲	▲	▲
Nitric Acid (15-30%)	●	●	●
Nitric Acid (30-45%)	●	■	■
2-Nitroanisole	▲	▲	▲
Nitrobenzene	▲	●	■
Oakite Cleaning Solutions	▲	▲	▲
Octyl Aldehyde	▲	▲	■
Oleic Acid	▲	▲	-
Oleyl Alcohol	▲	▲	▲
Oxalic Acid (0-12.5%)	●	●	●
Palladium Chloride	▲	▲	-
Pentachlorophenol	▲	▲	▲
2, 4-Pentanedione	▲	●	●
Perchlorethylene	▲	▲	▲
Phenol Sulfonic Acid	▲	▲	▲
Phosphoric Acid (0-40%)	▲	▲	●
Phosphoric Acid (40-80%)	●	●	●
Phthalic Acid (0-19%)	●	■	■
Picking Acids – Sulfuric & HCl	▲	▲	▲
4-Picoline (0-50%)	●	■	■
Picric Acid	▲	▲	-
Plating Solutions – All	▲	▲	-
Platinic Acid	▲	▲	-
Platinum Chloride	▲	▲	-
Platinum Sulfate	▲	▲	-
Potassium Aluminum Silicate	▲	▲	▲
Potassium Arsenate	▲	▲	-
Potassium Arsenite Acid	▲	▲	-
Potassium Bicarbonate	▲	▲	▲
Potassium Borate	▲	▲	-

CHEMICAL	8300 SYSTEM	8200 SYSTEM	8000 SYSTEM
Potassium Bromide	▲	▲	-
Potassium Carbonate	▲	▲	▲
Potassium Chloride	▲	▲	-
Potassium Cyanate	▲	▲	-
Potassium Cyanide	▲	▲	-
Potassium Dichromate	▲	▲	-
Potassium Fluoride	▲	▲	-
Potassium Hydrosulfide	▲	▲	-
Potassium Hydroxide	▲	▲	-
Potassium Hypochlorite	▲	▲	-
Potassium Hypophosphite	▲	▲	-
Potassium Iodide	▲	▲	-
Potassium Nitrate	▲	▲	-
Potassium Phosphate, Hydrogen	▲	▲	-
Potassium Phosphate, Pyro	▲	▲	-
Potassium Phosphite	▲	▲	-
Potassium Silicate	▲	▲	-
Potassium Sulfate	▲	▲	-
Potassium Sulfide	▲	▲	-
Potassium Sulfite	▲	▲	-
Potassium Thiocarbonate	▲	▲	-
Potassium Thiocyanate	▲	▲	-
Propylamine (0-10%)	▲	●	●
Propylene Glycol	▲	▲	▲
Pryfon	▲	▲	▲
Pulp Mill Liquors	▲	▲	-
Rhodium Chloride	▲	▲	-
Rhodium Sulfate	▲	▲	-
Salicylic Acid	▲	▲	▲
Selenic Acid	▲	▲	-
Silicic Acid	▲	▲	-
Silicon Fluoride	▲	▲	-
Silver Nitrate	▲	▲	▲
Silver Perchlorate	▲	▲	-
Silver Permanganate	▲	▲	-
Silver Thiosulfate	▲	▲	-
Skydrol	▲	▲	▲
Soaps	▲	▲	▲
Sodium Acetate	▲	▲	▲
Sodium Benzoate	▲	▲	-
Sodium Bicarbonate	▲	▲	▲
Sodium Bisulfate	▲	▲	▲
Sodium Bromide	▲	▲	-
Sodium Carbonate	▲	▲	-
Sodium Chloride	▲	▲	▲
Sodium Chlorate (0-50%)	▲	▲	▲
Sodium Cyanide	▲	▲	-
Sodium Dichromate	▲	▲	-
Sodium Ferrocyanide	▲	▲	-
Sodium Fluoride	▲	▲	-
Sodium Hydrosulfite	▲	▲	▲
Sodium Hydroxide (0-50%)	▲	▲	▲
Sodium Hypochlorite (0-12.5%)	●	●	●
Sodium Hypochlorite (12.5-15%)	●	●	●
Sodium Metabisulfite (0-40%)	▲	▲	▲
Sodium Methoxide (0-30%)	▲	▲	●
Sodium Nitrate	▲	▲	-
Sodium Persulfate (0-55%)	●	●	●
Sodium Phosphate	▲	▲	-
Sodium Silicate	▲	▲	▲

CHEMICAL	8300 SYSTEM	8200 SYSTEM	8000 SYSTEM
Sodium Sulfate	▲	▲	-
Sodium Sulfite (0-30%)	▲	▲	▲
Sodium Tetraborate	▲	▲	-
Sodium Thiocyanate (0-16%)	▲	▲	▲
Sodium Thiosulfate	▲	▲	-
Stannic Chloride	▲	▲	-
Stearic Acid (0-10%)	▲	▲	■
Styrene	▲	▲	■
Sugars	▲	▲	▲
Sulfamic Acid (0-25%)	▲	▲	▲
Sulfite Liquors	▲	▲	-
Sulfur Chloride	●	●	●
Sulfuric Acid (0-40%)	▲	▲	▲
Sulfuric Acid (40-75%)	▲	▲	■
Sulfuric Acid (75-98%)	▲	■	■
Sulfurous Acid (0-7%)	▲	▲	-
Tannic Acid	▲	▲	-
Tantalum Fluoride	▲	▲	-
Tartaric Acid	▲	▲	-
Tetrachloroethylene	▲	▲	●
Tetraethyl Lead	▲	▲	-
Tetrahydrofuran (0-15%)	▲	▲	▲
Tin Fluoborate (0-48%)	▲	▲	-
Titanium Chloride	▲	▲	▲
Titanium Fluoride	▲	▲	-
Titanium Nitrate	▲	▲	-
Titanium Tetrachloride	▲	▲	▲
Toluene	▲	▲	●
Toluidine	●	●	■
1-1-1 Trichloroethane	▲	▲	-
Trichloroethylene	▲	■	■
Trichlorotrifluoroethane	▲	●	■
Tricresyl Phosphate	▲	▲	-
Triethylenetetramine	●	●	-
Trisodium Phosphate (0-20%)	▲	▲	▲
Tung Oil	▲	▲	▲
Turpentine	▲	▲	-
Urea (0-50%)	▲	▲	▲
Urine	▲	▲	▲
Vegetable Oils – All	▲	▲	-
Vinegar	▲	▲	▲
Vinyl Acetate	▲	▲	-
Vinyltrimethoxysilane	▲	▲	▲
Water	▲	▲	▲
Water, Salt	▲	▲	▲
Wine	▲	▲	▲
Xylene	▲	▲	●
Zinc Chloride	▲	▲	▲
Zinc Fluorosilicate	▲	▲	-
Zinc Formate	▲	▲	-
Zinc Permanganate	▲	▲	-
Zinc Sulfate	▲	▲	▲



CITADEL TOOLS

We sell the tools you need to get the job done right!

Dualie Paint Tray™



The Citadel Dualie Paint Tray is used in combination with the Dualie Roller to create the Citadel Medici System™ that provides virtually any look imaginable, with no more effort than it takes to roll paint on a wall. The Split Pan separates the two Medici Base Coats with the Citadel Color Shots™ you've chosen.

Typical Uses: The Dualie Paint Tray is used in combination with the Dualie Roller to create the Citadel Medici System™.

Container: box **Quantity:** 1 tray/box

9" Dualie Roller™



The Citadel 9" Dualie Roller is used in combination with the Dualie Paint Tray to create the Citadel Medici System™ that provides virtually any look imaginable, with no more effort than it takes to roll paint on a wall.

Typical Uses: The Dualie Paint Tray is used in combination with the Dualie Roller to create the Citadel Medici System.

Container: box **Quantity:** 1 roller/box

Dual Cartridge Caulking Gun



This tool is specifically designed for applying the Polyflex-93™ product. It is a unique pistol-grip caulking gun that presses two tubes with the squeeze of the trigger. With a very sturdy construction, this tool is built to last.

Typical Uses: This tool is specifically designed for applying the Polyflex-93 product.

Quantity: 1 pc.

Moisture Meter



This tool is a pocket size non-destructive meter designed and calibrated specifically to measure the moisture content in concrete flooring prior to the application of floor coverings. It provides instant readings, measures up to 6% moisture content, and features a large, easy to read analog display.

Typical Uses: For use on concrete, comparative readings on stone, lightweight concrete, gypsum floor screeds, ceramic tiles and other masonry type materials.

Quantity: 1 pc.



The Citadel Go-Zirra planetary grinder system is an excellent choice for small to medium size concrete preparation jobs. While offering a hefty 520 lbs. of optional head pressure, this machine is still nimble enough to be easily loaded and unloaded at the job site. The removable handles screw into the front of the head unit allowing for transportation down stairs, into trailers or box trucks, or tight spaces using two people. Its power to weight ratio offers fast production rates and aggressive profiles for use with any coating systems.

Features:

- Available in 18” or 24” models
- Variable speed control
- 100% steel gear driven technology – no belts to break or wear out!
- Flexible mounting heads follow the contour of the substrate being prepared
- Magnetic diamond tooling attachments make changing pads fast and easy
- Can be used for coarse grinding, polishing, sanding, coatings removal, or maintenance
- Disassembles for easy transportation or repairs



Citadel offers a full line of coating tools & equipment including:

- | | |
|-----------------------------------|-------------------------------|
| • Hand Grinders | • Shot Blasters & Accessories |
| • Cup Wheels | • Measuring Buckets |
| • V-shaped Crack Blades | • Chip Brushes |
| • Pulse Bac Vacuums & Accessories | • Squeegees |
| • Rollers & Roller Covers | • Floor Scrapers |
| • Shoe Spikes | • Concrete Testing Supplies |





www.citadelfloors.com

(866) 765-4310



Scan this
QR Barcode
with your phone
and learn more
about **Citadel**